

A10954

Leader in Biomolecular Solutions for Life Science



LAMP2 Rabbit mAb

Catalog No.: A10954

Recombinant

Basic Information

Observed MW

120kDa

Calculated MW

45kDa

Category

SMab Recombinant Monoclonal Antibody

Applications

WB, IHC-P, IP, ELISA

Cross-Reactivity

Human, Mouse, Rat

Background

The protein encoded by this gene is a member of a family of membrane glycoproteins. This glycoprotein provides selectins with carbohydrate ligands. It may play a role in tumor cell metastasis. It may also function in the protection, maintenance, and adhesion of the lysosome. Alternative splicing of this gene results in multiple transcript variants encoding distinct proteins.

Recommended Dilutions

WB	1:500 - 1:2000
IHC-P	1:50 - 1:200
IP	1:20 - 1:50

Immunogen Information

Gene ID

3920

Swiss Prot

P13473

Immunogen

Recombinant protein of human LAMP2

Synonyms

DND; LAMPB; CD107b; LAMP-2; LGP-96; LGP110; LAMP2

Contact



www.abclonal.com

Product Information

Source

Rabbit

Isotype

IgG

Purification

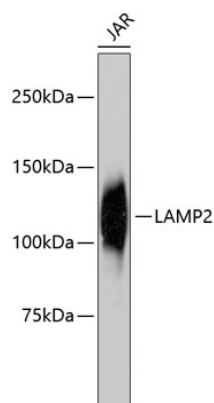
Affinity purification

Storage

Store at -20°C. Avoid freeze / thaw cycles.

Buffer: PBS with 0.02% sodium azide, 50% glycerol, pH 7.3.

Validation Data



Western blot analysis of extracts of JAR cells, using LAMP2 antibody (A10954).
Secondary antibody: HRP Goat Anti-Rabbit IgG (H+L) (AS014) at 1:10000 dilution.
Lysates/proteins: 25µg per lane.
Blocking buffer: 3% nonfat dry milk in TBST.