

## DLG4 Monoclonal Antibody

<b>Catalog No.</b>	A10841	<b>Category</b>	Monoclonal Antibodies
<b>Applications</b>	WB, IHC, IF, IP	<b>Observed MW</b>	80kDa
<b>Cross-reactivity</b>	Human, Mouse, Rat	<b>Calculated MW</b>	80kDa/85kDa

### Immunogen Information

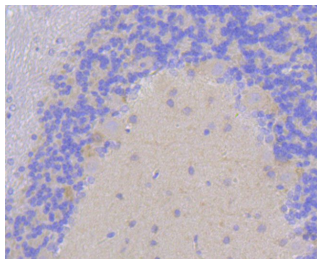
<b>Immunogen</b>	Recombinant protein of human DLG4
<b>Gene ID</b>	1742
<b>Swiss prot</b>	P78352
<b>Synonyms</b>	PSD95;SAP-90;SAP90

### Product information

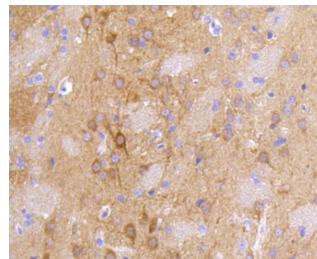
<b>Source</b>	Rabbit
<b>Isotype</b>	IgG
<b>Purification method</b>	Affinity purification
<b>Storage</b>	Store at -20°C. Avoid freeze / thaw cycles. Buffer: PBS with 0.02% sodium azide, 50% glycerol, pH7.3.

### Background

This gene encodes a member of the membrane-associated guanylate kinase (MAGUK) family. It heteromultimerizes with another MAGUK protein, DLG2, and is recruited into NMDA receptor and potassium channel clusters. These two MAGUK proteins may interact at postsynaptic sites to form a multimeric scaffold for the clustering of receptors, ion channels, and associated signaling proteins. Multiple transcript variants encoding different isoforms have been found for this gene.



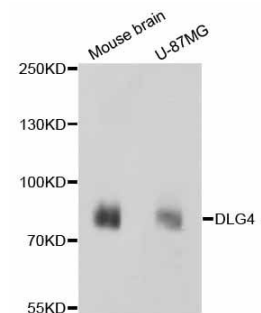
Immunohistochemistry of paraffin-embedded rat cerebellum using DLG4 antibody (A10841) at dilution of 1:100 (40x lens).



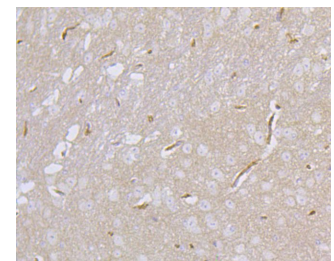
Immunohistochemistry of paraffin-embedded rat brain using DLG4 antibody (A10841) at dilution of 1:100 (40x lens).

### Recommended Dilutions

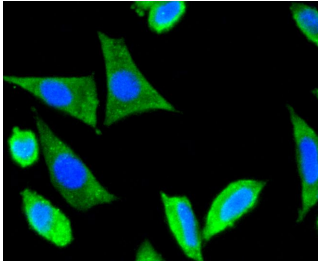
WB	1:500 - 1:2000
IHC	1:50 - 1:200
IF	1:50 - 1:200
IP	1:20 - 1:50



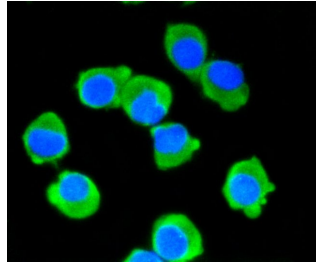
Western blot analysis of extracts of various cell lines, using DLG4 antibody (A10841).  
Secondary antibody: HRP Goat Anti-Rabbit IgG (H+L) (AS014) at 1:10000 dilution.  
Lysates/proteins: 25ug per lane.  
Blocking buffer: 3% nonfat dry milk in TBST.



Immunohistochemistry of paraffin-embedded mouse cerebellum using DLG4 antibody (A10841) at dilution of 1:100 (40x lens).



Immunofluorescence analysis of SH-SY-5Y cells using DLG4 antibody (A10841).



Immunofluorescence analysis of N2A cells using DLG4 antibody (A10841).