

CCND1 Monoclonal Antibody

Catalog No.	A10757	Category	Monoclonal Antibodies
Applications	WB, IHC, IF, IP	Observed MW	34kDa
Cross-reactivity	Human, Mouse, Rat	Calculated MW	33kDa

Immunogen Information

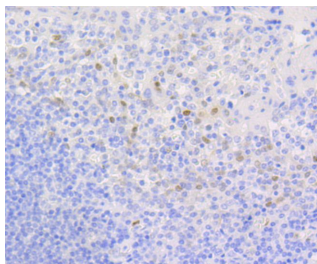
Immunogen	Recombinant protein of human CCND1
Gene ID	595
Swiss prot	P24385
Synonyms	BCL1;D11S287E;PRAD1;U21B31

Product information

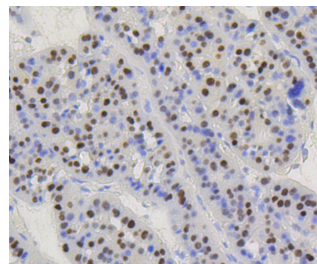
Source	Rabbit
Isotype	IgG
Purification method	Affinity purification
Storage	Store at -20°C. Avoid freeze / thaw cycles. Buffer: PBS with 0.02% sodium azide, 50% glycerol, pH7.3.

Background

The protein encoded by this gene belongs to the highly conserved cyclin family, whose members are characterized by a dramatic periodicity in protein abundance throughout the cell cycle. Cyclins function as regulators of CDK kinases. Different cyclins exhibit distinct expression and degradation patterns which contribute to the temporal coordination of each mitotic event. This cyclin forms a complex with and functions as a regulatory subunit of CDK4 or CDK6, whose activity is required for cell cycle G1/S transition. This protein has been shown to interact with tumor suppressor protein Rb and the expression of this gene is regulated positively by Rb. Mutations, amplification and overexpression of this gene, which alters cell cycle progression, are observed frequently in a variety of tumors and may contribute to tumorigenesis.



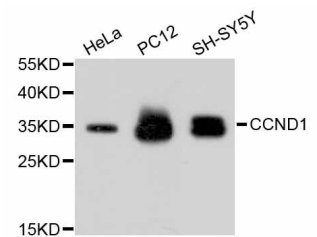
Immunohistochemistry of paraffin-embedded human tonsil using CCND1 antibody (A10757) at dilution of 1:100 (40x lens).



Immunohistochemistry of paraffin-embedded human liver cancer using CCND1 antibody (A10757) at dilution of 1:100 (40x lens).

Recommended Dilutions

WB	1:1000 - 1:5000
IHC	1:50 - 1:200
IF	1:50 - 1:100
IP	1:20 - 1:50

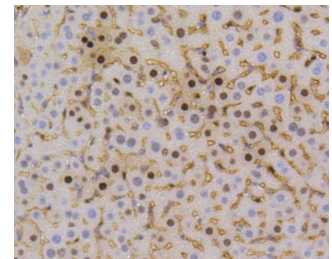


Western blot analysis of extracts of various cell lines, using CCND1 antibody (A10757).

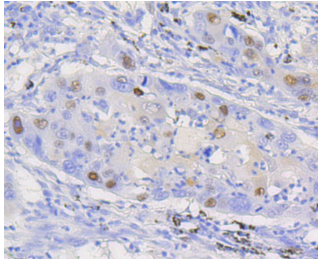
Secondary antibody: HRP Goat Anti-Rabbit IgG (H+L) (AS014) at 1:10000 dilution.

Lysates/proteins: 25ug per lane.

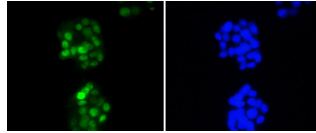
Blocking buffer: 3% nonfat dry milk in TBST.



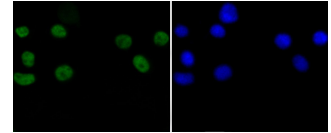
Immunohistochemistry of paraffin-embedded mouse liver using CCND1 antibody (A10757) at dilution of 1:100 (40x lens).



Immunohistochemistry of paraffin-embedded human lung using CCND1 antibody (A10757) at dilution of 1:100 (40x lens).



Immunofluorescence analysis of PC-12 cells using CCND1 antibody (A10757).



Immunofluorescence analysis of N2A cells using CCND1 antibody (A10757).