

A10745

Leader in Biomolecular Solutions for Life Science



ATM Rabbit mAb

Catalog No.: A10745

Recombinant

Basic Information

Observed MW

351kDa

Calculated MW

351kDa

Category

SMab Recombinant Monoclonal Antibody

Applications

WB,IF/ICC,ELISA

Cross-Reactivity

Human

Background

The protein encoded by this gene belongs to the PI3/PI4-kinase family. This protein is an important cell cycle checkpoint kinase that phosphorylates; thus, it functions as a regulator of a wide variety of downstream proteins, including tumor suppressor proteins p53 and BRCA1, checkpoint kinase CHK2, checkpoint proteins RAD17 and RAD9, and DNA repair protein NBS1. This protein and the closely related kinase ATR are thought to be master controllers of cell cycle checkpoint signaling pathways that are required for cell response to DNA damage and for genome stability. Mutations in this gene are associated with ataxia telangiectasia, an autosomal recessive disorder.

Recommended Dilutions

| | |
|--------|----------------|
| WB | 1:500 - 1:2000 |
| IF/ICC | 1:50 - 1:200 |

Immunogen Information

| | |
|---------|------------|
| Gene ID | Swiss Prot |
| 472 | Q13315 |

Immunogen

Recombinant protein of human ATM

Synonyms

AT1; ATA; ATC; ATD; ATE; ATDC; TEL1; TELO1; ATM

Contact



www.abclonal.com

Product Information

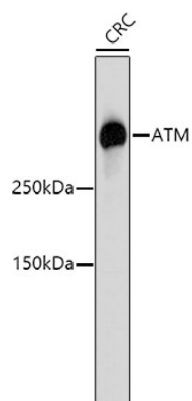
| | | |
|--------|---------|-----------------------|
| Source | Isotype | Purification |
| Rabbit | IgG | Affinity purification |

Storage

Store at -20°C. Avoid freeze / thaw cycles.

Buffer: PBS with 0.02% sodium azide, 50% glycerol, pH 7.3.

Validation Data



Western blot analysis of extracts of CRC cells, using ATM antibody (A10745).
Secondary antibody: HRP Goat Anti-Rabbit IgG (H+L) (AS014) at 1:10000 dilution.
Lysates/proteins: 25µg per lane.
Blocking buffer: 3% nonfat dry milk in TBST.