

A10611

Leader in Biomolecular Solutions for Life Science



γ-Tubulin

Catalog No.: A10611

Basic Information

Observed MW

51kDa

Calculated MW

51kDa

Category

SMab Recombinant Monoclonal Antibody

Applications

WB, IHC-P

Cross-Reactivity

Human, Mouse, Rat

Background

This gene encodes a member of the tubulin superfamily. The encoded protein localizes to the centrosome where it binds to microtubules as part of a complex referred to as the gamma-tubulin ring complex. The protein mediates microtubule nucleation and is required for microtubule formation and progression of the cell cycle. A pseudogene of this gene is found on chromosome 7.

Recommended Dilutions

WB 1:1000 - 1:2000

IHC-P 1:50 - 1:200

Immunogen Information

Gene ID

7283

Swiss Prot

P23258

Immunogen

A synthetic peptide of human TUBG1

Synonyms

TUBG; GCP-1; CDCBM4; TUBGCP1

Contact



www.abclonal.com

Product Information

Source

Mouse

Isotype

IgG

Purification

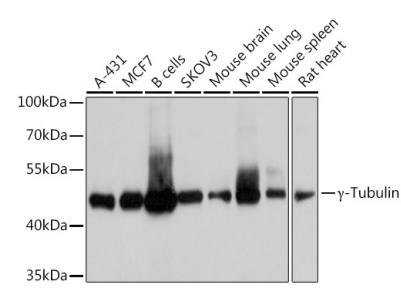
Affinity purification

Storage

Store at -20°C. Avoid freeze / thaw cycles.

Buffer: PBS with 0.02% sodium azide, 50% glycerol, pH 7.3.

Validation Data



Western blot analysis of various lysates using γ -Tubulin (A10611) at 1:1000 dilution.
Secondary antibody: HRP Goat Anti-Mouse IgG (H+L) (AS003) at 1:10000 dilution.
Lysates/proteins: 25 μ g per lane.
Blocking buffer: 3% nonfat dry milk in TBST.
Detection: ECL Basic Kit (RM00020).
Exposure time: 5s.