

A10603

Leader in Biomolecular Solutions for Life Science



## HSF2BP Rabbit pAb

Catalog No.: A10603

### Basic Information

**Observed MW**

38kDa

**Calculated MW**

37kDa

**Category**

Polyclonal Antibody

**Applications**

WB,IF/ICC,ELISA

**Cross-Reactivity**

Human,Mouse,Rat

### Background

Involved in meiosis I and spermatogenesis. Located in chromosome. Is expressed in several structures, including genitourinary system; nervous system; sensory organ; surface ectoderm; and thymus. Human ortholog(s) of this gene implicated in primary ovarian insufficiency 19. Orthologous to human HSF2BP (heat shock transcription factor 2 binding protein).

### Recommended Dilutions

**WB** 1:500 - 1:2000

**IF/ICC** 1:50 - 1:200

### Immunogen Information

**Gene ID**

74377

**Swiss Prot****Immunogen**

Recombinant fusion protein containing a sequence corresponding to amino acids 1-338 of mouse HSF2BP (NP\_083178.1).

**Synonyms**

Meilb2; 4932437G14Rik; HSF2BP

### Contact



[www.abclonal.com](http://www.abclonal.com)

### Product Information

**Source**

Rabbit

**Isotype**

IgG

**Purification**

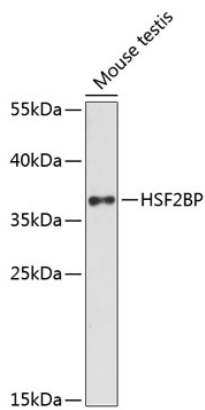
Affinity purification

**Storage**

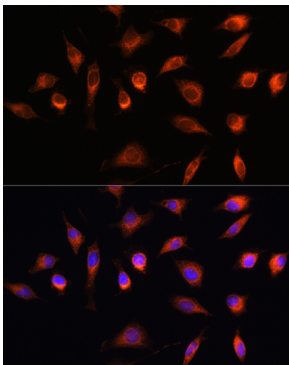
Store at -20°C. Avoid freeze / thaw cycles.

Buffer: PBS with 0.01% thimerosal,50% glycerol,pH7.3.

## Validation Data



Western blot analysis of lysates from mouse testis, using HSF2BP Rabbit pAb (A10603) at 1:3000 dilution.  
Secondary antibody: HRP Goat Anti-Rabbit IgG (H+L) (AS014) at 1:10000 dilution.  
Lysates/proteins: 25µg per lane.  
Blocking buffer: 3% nonfat dry milk in TBST.  
Detection: ECL Enhanced Kit (RM00021).  
Exposure time: 90s.



Immunofluorescence analysis of L929 cells using HSF2BP Rabbit pAb (A10603) at dilution of 1:100. Secondary antibody: Cy3 Goat Anti-Rabbit IgG (H+L) (AS007) at 1:500 dilution. Blue: DAPI for nuclear staining.