

A10520

Leader in Biomolecular Solutions for Life Science



## NEPRO Rabbit pAb

Catalog No.: A10520

### Basic Information

**Observed MW**

63kDa

**Calculated MW**

63kDa

**Category**

Polyclonal Antibody

**Applications**

WB, ELISA

**Cross-Reactivity**

Human, Mouse, Rat

### Background

Acts upstream of or within negative regulation of neuron differentiation and positive regulation of Notch signaling pathway. Located in nucleolus. Is expressed in several structures, including adipose tissue; alimentary system; genitourinary system; integumental system; and nervous system. Human ortholog(s) of this gene implicated in anauxetic dysplasia 3. Orthologous to human NEPRO (nucleolus and neural progenitor protein).

### Recommended Dilutions

WB 1:100 - 1:500

### Immunogen Information

**Gene ID**

212547

**Swiss Prot****Immunogen**

Recombinant fusion protein containing a sequence corresponding to amino acids 263-564 of mouse NEPRO (NP\_666084.1).

**Synonyms**

NEPRO; C3orf17; NET17; bc027231

### Contact



[www.abclonal.com](http://www.abclonal.com)

### Product Information

**Source**

Rabbit

**Isotype**

IgG

**Purification**

Affinity purification

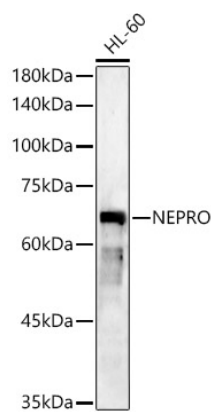
**Storage**

Store at -20°C. Avoid freeze / thaw cycles.

Buffer: PBS with 0.05% proclin300, 50% glycerol, pH7.3.

## Validation Data

---



Western blot analysis of lysates from HL-60 cells, using NEPRO Rabbit pAb (A10520) at 1:500 dilution.  
Secondary antibody: HRP Goat Anti-Rabbit IgG (H+L) (AS014) at 1:10000 dilution.  
Lysates/proteins: 25µg per lane.  
Blocking buffer: 3% nonfat dry milk in TBST.  
Detection: ECL Basic Kit (RM00020).  
Exposure time: 90s.