

A10182

Leader in Biomolecular Solutions for Life Science



HLA-G Mouse mAb

Catalog No.: A10182

Basic Information

Observed MW

50kDa

Calculated MW

38kDa

Category

SMab Recombinant Monoclonal Antibody

Applications

WB, ELISA

Cross-Reactivity

Human

Background

HLA-G belongs to the HLA class I heavy chain paralogues. This class I molecule is a heterodimer consisting of a heavy chain and a light chain (beta-2 microglobulin). The heavy chain is anchored in the membrane. HLA-G is expressed on fetal derived placental cells. The heavy chain is approximately 45 kDa and its gene contains 8 exons. Exon one encodes the leader peptide, exons 2 and 3 encode the alpha1 and alpha2 domain, which both bind the peptide, exon 4 encodes the alpha3 domain, exon 5 encodes the transmembrane region, and exon 6 encodes the cytoplasmic tail.

Recommended Dilutions

WB 1:500 - 1:1000

Immunogen Information

Gene ID

3135

Swiss Prot

P17693

Immunogen

Recombinant protein of human HLA-G

Synonyms

MHC-G; HLA-G

Contact



www.abclonal.com

Product Information

Source

Mouse

Isotype

IgG

Purification

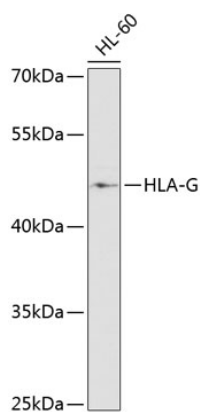
Affinity purification

Storage

Store at 4°C. Avoid freeze / thaw cycles.

Buffer: PBS with 0.02% sodium azide, pH 7.3.

Validation Data



Western blot analysis of lysates from HL60 cells, using HLA-G Mouse mAb (A10182) at 1:1000 dilution.
Secondary antibody: HRP Goat Anti-Mouse IgG (H+L) (A5003) at 1:10000 dilution.
Lysates/proteins: 25µg per lane.
Blocking buffer: 3% nonfat dry milk in TBST.
Detection: ECL Basic Kit (RM00020).
Exposure time: 90s.