

Mitofusin 2 Rabbit pAb

Catalog No.: A10175

Basic Information

Observed MW

86kDa

Calculated MW

86kDa

Category

Primary antibody

Applications

ELISA, WB

Cross-Reactivity

Human, Mouse

Background

This gene encodes a mitochondrial membrane protein that participates in mitochondrial fusion and contributes to the maintenance and operation of the mitochondrial network. This protein is involved in the regulation of vascular smooth muscle cell proliferation, and it may play a role in the pathophysiology of obesity. Mutations in this gene cause Charcot-Marie-Tooth disease type 2A2, and hereditary motor and sensory neuropathy VI, which are both disorders of the peripheral nervous system. Defects in this gene have also been associated with early-onset stroke. Two transcript variants encoding the same protein have been identified.

Recommended Dilutions

WB 1:500 - 1:2000

Immunogen Information

Gene ID

9927

Swiss Prot

O95140

Immunogen

Recombinant fusion protein containing a sequence corresponding to amino acids 1-300 of human Mitofusin 2 (NP_001121132.1).

Synonyms

HSG; MARF; CMT2A; CPRP1; CMT2A2; HMSN6A; CMT2A2A; CMT2A2B; Mitofusin 2

Contact

 | www.abclonal.com

Product Information

Source

Rabbit

Isotype

IgG

Purification

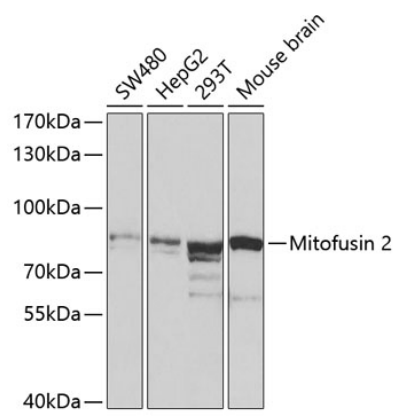
Affinity purification

Storage

Store at -20°C. Avoid freeze / thaw cycles.

Buffer: PBS with 0.02% sodium azide, 50% glycerol, pH7.3.

Validation Data



Western blot analysis of extracts of various cell lines, using Mitofusin 2 antibody (A10175) at 1:1000 dilution.
Secondary antibody: HRP Goat Anti-Rabbit IgG (H+L) (A5014) at 1:10000 dilution.
Lysates/proteins: 25µg per lane.
Blocking buffer: 3% nonfat dry milk in TBST.
Detection: ECL Basic Kit (RM00020).
Exposure time: 60s.