

A10048

Leader in Biomolecular Solutions for Life Science



## MARCO Rabbit pAb

Catalog No.: A10048

3 Publications

### Basic Information

#### Observed MW

64kDa

#### Calculated MW

53kDa

#### Category

Polyclonal Antibody

#### Applications

WB, IF/ICC, ELISA

#### Cross-Reactivity

Human, Mouse, Rat

### Background

The protein encoded by this gene is a member of the class A scavenger receptor family and is part of the innate antimicrobial immune system. The protein may bind both Gram-negative and Gram-positive bacteria via an extracellular, C-terminal, scavenger receptor cysteine-rich (SRCR) domain. In addition to short cytoplasmic and transmembrane domains, there is an extracellular spacer domain and a long, extracellular collagenous domain. The protein may form a trimeric molecule by the association of the collagenous domains of three identical polypeptide chains.

### Recommended Dilutions

WB	1:500 - 1:1000
IF/ICC	1:50 - 1:200

### Immunogen Information

#### Gene ID

8685

#### Swiss Prot

Q9UEW3

#### Immunogen

Recombinant fusion protein containing a sequence corresponding to amino acids 421-520 of human MARCO (NP\_006761.1).

#### Synonyms

SR-A6; SCARA2; MARCO

### Contact



[www.abclonal.com](http://www.abclonal.com)

### Product Information

#### Source

Rabbit

#### Isotype

IgG

#### Purification

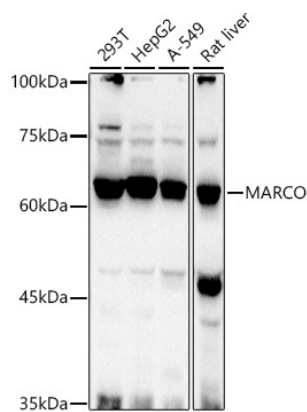
Affinity purification

#### Storage

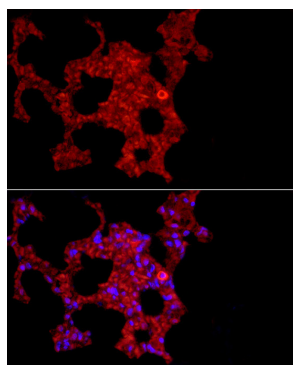
Store at -20°C. Avoid freeze / thaw cycles.

Buffer: PBS with 0.05% proclin300, 50% glycerol, pH7.3.

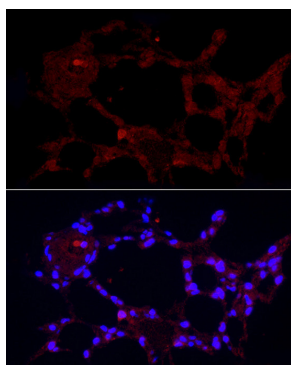
## Validation Data



Western blot analysis of extracts of various cell lines, using MARCO antibody (A10048) at 1:1000 dilution.  
Secondary antibody: HRP Goat Anti-Rabbit IgG (H+L) (AS014) at 1:10000 dilution.  
Lysates/proteins: 25µg per lane.  
Blocking buffer: 3% nonfat dry milk in TBST.  
Detection: ECL Basic Kit (RM00020).  
Exposure time: 10s.



Immunofluorescence analysis of rat lung cells using MARCO Rabbit pAb (A10048) at dilution of 1:200 (40x lens). Blue: DAPI for nuclear staining.



Immunofluorescence analysis of mouse lung cells using MARCO Rabbit pAb (A10048) at dilution of 1:200 (40x lens). Blue: DAPI for nuclear staining.