

ENO1 Rabbit pAb

Catalog No.: A0897

Basic Information

Observed MW

50kDa

Calculated MW

47kDa

Category

Primary antibody

Applications

ELISA, WB, IHC-P, FC

Cross-Reactivity

Human, Mouse

Background

This gene encodes alpha-enolase, one of three enolase isoenzymes found in mammals. Each isoenzyme is a homodimer composed of 2 alpha, 2 gamma, or 2 beta subunits, and functions as a glycolytic enzyme. Alpha-enolase in addition, functions as a structural lens protein (tau-crystallin) in the monomeric form. Alternative splicing of this gene results in a shorter isoform that has been shown to bind to the c-myc promoter and function as a tumor suppressor. Several pseudogenes have been identified, including one on the long arm of chromosome 1. Alpha-enolase has also been identified as an autoantigen in Hashimoto encephalopathy.

Recommended Dilutions

WB	1:500 - 1:1000
IHC-P	1:50 - 1:100
FC	1:20 - 1:50

Immunogen Information

Gene ID

2023

Swiss Prot

P06733

Immunogen

Recombinant fusion protein containing a sequence corresponding to amino acids 1-434 of human ENO1 (NP_001419.1).

Synonyms

NNE; PPH; MPB1; ENO1L1; ENO1-IT1; HEL-S-17; ENO1

Contact

 | www.abclonal.com

Product Information

Source

Rabbit

Isotype

IgG

Purification

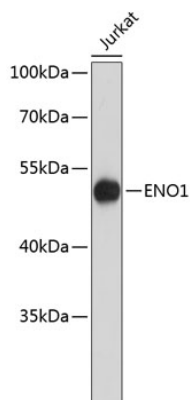
Affinity purification

Storage

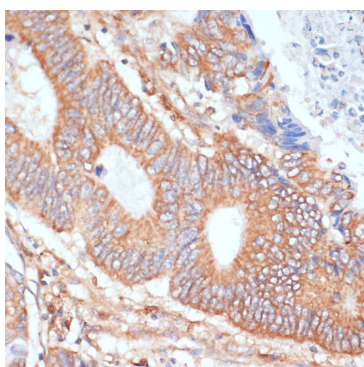
Store at -20°C. Avoid freeze / thaw cycles.

Buffer: PBS with 0.02% sodium azide, 50% glycerol, pH 7.3.

Validation Data



Western blot analysis of extracts of Jurkat cells, using ENO1 antibody (A0897).
Secondary antibody: HRP Goat Anti-Rabbit IgG (H+L) (A5014) at 1:10000 dilution.
Lysates/proteins: 25µg per lane.
Blocking buffer: 3% nonfat dry milk in TBST.



Immunohistochemistry analysis of paraffin-embedded human colon carcinoma using ENO1 antibody (A0897) at dilution of 1:100 (40x lens). Perform microwave antigen retrieval with 10 mM PBS buffer pH 7.2 before commencing with IHC staining protocol.