

A0895

Leader in Biomolecular Solutions for Life Science



EpCAM Mouse mAb

Catalog No.: A0895

Basic Information

Observed MW

35kDa

Calculated MW

35kDa

Category

SMab Recombinant Monoclonal Antibody

Applications

WB, ELISA

Cross-Reactivity

Human

Background

This gene encodes a carcinoma-associated antigen and is a member of a family that includes at least two type I membrane proteins. This antigen is expressed on most normal epithelial cells and gastrointestinal carcinomas and functions as a homotypic calcium-independent cell adhesion molecule. The antigen is being used as a target for immunotherapy treatment of human carcinomas. Mutations in this gene result in congenital tufting enteropathy.

Recommended Dilutions

WB 1:500 - 1:1000

Immunogen Information

Gene ID

4072

Swiss Prot

P16422

Immunogen

Recombinant protein of human EpCAM

Synonyms

ESA; KSA; M4S1; MK-1; DIAR5; EGP-2; EGP40; KS1/4; MIC18; TROP1; BerEp4; EGP314; HNPCC8; LYNCH8; MOC-31; Ber-Ep4; TACSTD1; EpCAM

Contact



www.abclonal.com

Product Information

Source

Mouse

Isotype

IgG

Purification

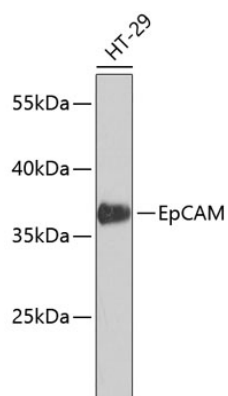
Affinity purification

Storage

Store at -20°C. Avoid freeze / thaw cycles.

Buffer: PBS with 0.02% sodium azide, 50% glycerol, pH 7.3.

Validation Data



Western blot analysis of lysates from HT-29 cells, using EpCAM Mouse mAb (A0895) at 1:1000 dilution.
Secondary antibody: HRP Goat Anti-Mouse IgG (H+L) (A5003) at 1:10000 dilution.
Lysates/proteins: 25µg per lane.
Blocking buffer: 3% nonfat dry milk in TBST.
Detection: ECL Basic Kit (RM00020).
Exposure time: 90s.