

A0666

Leader in Biomolecular Solutions for Life Science



CSK Rabbit mAb

Catalog No.: A0666 **Recombinant**

Basic Information

Observed MW

48kDa

Calculated MW

51kDa

Category

SMab Recombinant Monoclonal Antibody

Applications

WB,IHC-P,ELISA

Cross-Reactivity

Human,Mouse,Rat

CloneNo number

ARC1835

Background

The protein encoded by this gene is involved in multiple pathways, including the regulation of Src family kinases. It plays an important role in T-cell activation through its association with the protein encoded by the protein tyrosine phosphatase, non-receptor type 22 (PTPN22) gene. This protein also phosphorylates C-terminal tyrosine residues on multiple substrates, including the protein encoded by the SRC proto-oncogene, non-receptor tyrosine kinase gene. Phosphorylation suppresses the kinase activity of the Src family tyrosine kinases. An intronic polymorphism (rs34933034) in this gene has been found to affect B-cell activation and is associated with systemic lupus erythematosus (SLE). Alternative splicing results in multiple transcript variants.

Recommended Dilutions

WB	1:500 - 1:1000
IHC-P	1:50 - 1:200

Immunogen Information

Gene ID

1445

Swiss Prot

P41240

Immunogen

A synthetic peptide corresponding to a sequence within amino acids 1-100 of human CSK (P41240).

Synonyms

CSK; tyrosine-protein kinase CSK

Contact



www.abclonal.com

Product Information

Source

Rabbit

Isotype

IgG

Purification

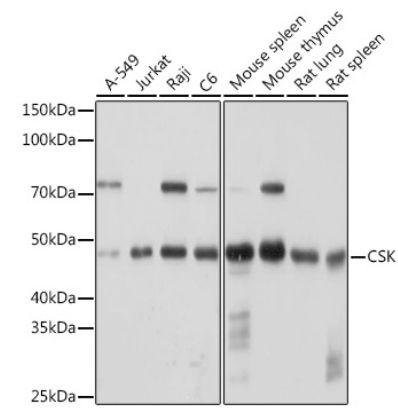
Affinity purification

Storage

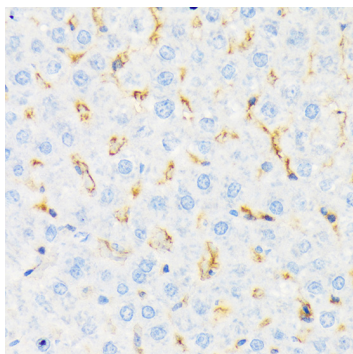
Store at -20°C. Avoid freeze / thaw cycles.

Buffer: PBS with 0.02% sodium azide,0.05% BSA,50% glycerol,pH7.3.

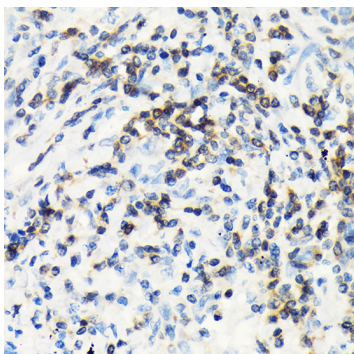
Validation Data



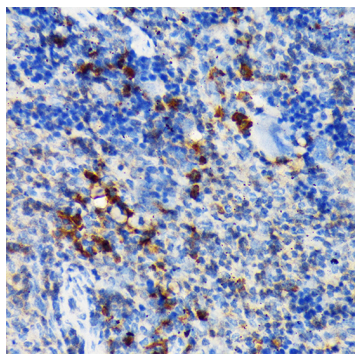
Western blot analysis of extracts of various cell lines, using CSK Rabbit mAb (A0666) at 1:1000 dilution.
Secondary antibody: HRP Goat Anti-Rabbit IgG (H+L) (A5014) at 1:10000 dilution.
Lysates/proteins: 25µg per lane.
Blocking buffer: 3% nonfat dry milk in TBST.
Detection: ECL Basic Kit (RM00020).
Exposure time: 30s.



Immunohistochemistry analysis of paraffin-embedded rat liver using CSK Rabbit mAb (A0666) at dilution of 1:100 (40x lens).Perform microwave antigen retrieval with 10 mM Tris/EDTA buffer pH 9.0 before commencing with IHC staining protocol.



Immunohistochemistry analysis of paraffin-embedded human lung cancer using CSK Rabbit mAb (A0666) at dilution of 1:100 (40x lens).Perform microwave antigen retrieval with 10 mM Tris/EDTA buffer pH 9.0 before commencing with IHC staining protocol.



Immunohistochemistry analysis of paraffin-embedded mouse spleen using CSK Rabbit mAb (A0666) at dilution of 1:100 (40x lens).Perform microwave antigen retrieval with 10 mM Tris/EDTA buffer pH 9.0 before commencing with IHC staining protocol.