

A0658

Leader in Biomolecular Solutions for Life Science



Estrogen Receptor beta Rabbit pAb

Catalog No.: A0658

Basic Information

Observed MW

50kDa

Calculated MW

59kDa

Category

Polyclonal Antibody

Applications

WB,FC

Cross-Reactivity

Human

Background

This gene encodes a member of the family of estrogen receptors and superfamily of nuclear receptor transcription factors. The gene product contains an N-terminal DNA binding domain and C-terminal ligand binding domain and is localized to the nucleus, cytoplasm, and mitochondria. Upon binding to 17beta-estradiol or related ligands, the encoded protein forms homo- or hetero-dimers that interact with specific DNA sequences to activate transcription. Some isoforms dominantly inhibit the activity of other estrogen receptor family members. Several alternatively spliced transcript variants of this gene have been described, but the full-length nature of some of these variants has not been fully characterized.

Recommended Dilutions

WB	1:500 - 1:1000
FC	1:20 - 1:50

Immunogen Information

Gene ID

2100

Swiss Prot

Q92731

Immunogen

A synthetic peptide of human Estrogen Receptor beta

Synonyms

Erb; ESRB; ODG8; ESTRB; NR3A2; ER-BETA; ESR-BETA; Estrogen Receptor beta

Contact



www.abclonal.com

Product Information

Source

Rabbit

Isotype

IgG

Purification

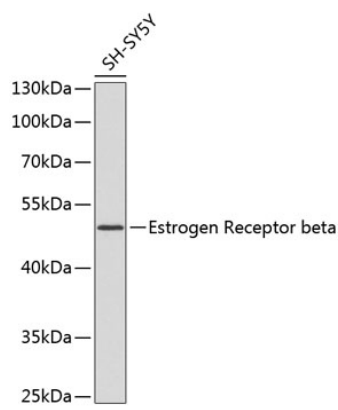
Affinity purification

Storage

Store at 4°C. Avoid freeze / thaw cycles.

Buffer: PBS with 0.02% sodium azide,pH7.3.

Validation Data



Western blot analysis of extracts of SH-SY5Y cells, using Estrogen Receptor beta antibody (A0658).
Secondary antibody: HRP Goat Anti-Rabbit IgG (H+L) (A5014) at 1:10000 dilution.
Lysates/proteins: 25µg per lane.
Blocking buffer: 3% nonfat dry milk in TBST.