

# β-Tubulin

Catalog No.: A0481

## Basic Information

### Observed MW

54kDa

### Calculated MW

50kDa

### Category

Primary antibody

### Applications

WB,IHC-P,IF/ICC

### Cross-Reactivity

Human, Mouse, Rat

## Background

This gene encodes a beta tubulin protein. This protein forms a dimer with alpha tubulin and acts as a structural component of microtubules. Mutations in this gene cause cortical dysplasia, complex, with other brain malformations 6. Alternative splicing results in multiple splice variants. There are multiple pseudogenes for this gene on chromosomes 1, 6, 7, 8, 9, and 13.

## Recommended Dilutions

<b>WB</b>	1:2000 - 1:10000
<b>IHC-P</b>	1:20 - 1:100
<b>IF/ICC</b>	1:20 - 1:50

## Immunogen Information

<b>Gene ID</b>	<b>Swiss Prot</b>
203068	P07437

### Immunogen

Recombinant protein of human TUBB

### Synonyms

M40; TUBB1; TUBB5; CDCBM6; CSCSC1; OK/SW-cl.56

## Contact

 | [www.abclonal.com](http://www.abclonal.com)

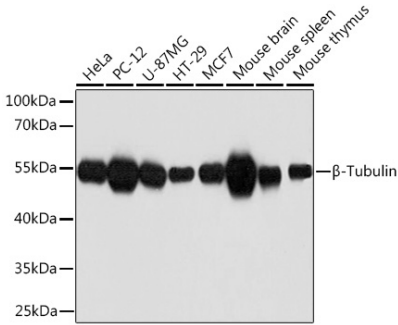
## Product Information

<b>Source</b>	<b>Isotype</b>	<b>Purification</b>
Mouse	IgG	Affinity purification

### Storage

Store at 4°C. Avoid freeze / thaw cycles.  
Buffer: PBS with 0.02% sodium azide,pH7.3.

# Validation Data



Western blot analysis of extracts of various cell lines, using TUBB antibody (A0481) at 1:1000 dilution.  
Secondary antibody: HRP Goat Anti-Mouse IgG (H+L) (AS003) at 1:10000 dilution.  
Lysates/proteins: 25µg per lane.  
Blocking buffer: 3% nonfat dry milk in TBST.  
Detection: ECL Basic Kit (RM00020).  
Exposure time: 3s.