

A0450

Leader in Biomolecular Solutions for Life Science



NF-kB p65/RelA Rabbit pAb

Catalog No.: A0450

2 Publications

Basic Information

Observed MW

60kDa

Calculated MW

60kDa

Category

Mouse Monoclonal Antibody

Applications

WB,IF/ICC,FC

Cross-Reactivity

Human,Mouse

Background

NF-kappa-B is a ubiquitous transcription factor involved in several biological processes. It is held in the cytoplasm in an inactive state by specific inhibitors. Upon degradation of the inhibitor, NF-kappa-B moves to the nucleus and activates transcription of specific genes. NF-kappa-B is composed of NFKB1 or NFKB2 bound to either REL, RELA, or RELB. The most abundant form of NF-kappa-B is NFKB1 complexed with the product of this gene, RELA. Four transcript variants encoding different isoforms have been found for this gene.

Recommended Dilutions

WB	1:500 - 1:1000
IF/ICC	1:20 - 1:50
FC	1:20 - 1:50

Immunogen Information

Gene ID

5970

Swiss Prot

Q04206

Immunogen

A synthetic peptide of human NF-kB p65/RelA

Synonyms

p65; CMCU; NFKB3; AIF3BL3; NF-kB p65/RelA

Contact



www.abclonal.com

Product Information

Source

Rabbit

Isotype

IgG

Purification

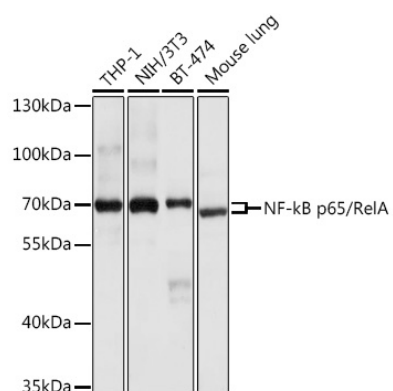
Affinity purification

Storage

Store at 4°C. Avoid freeze / thaw cycles.

Buffer: PBS with 0.02% sodium azide,pH7.3.

Validation Data



Western blot analysis of various lysates using NF-kB p65/RelA Rabbit pAb (A0450) at 1:1000 dilution.
Secondary antibody: HRP Goat Anti-Rabbit IgG (H+L) (A5014) at 1:10000 dilution.
Lysates/proteins: 25µg per lane.
Blocking buffer: 3% nonfat dry milk in TBST.
Detection: ECL Basic Kit (RM00020).
Exposure time: 10s.