

A0435

Leader in Biomolecular Solutions for Life Science



## Casein Kinase 2 alpha (CSNK2A1) Rabbit pAb

Catalog No.: A0435

### Basic Information

**Observed MW**

45kDa

**Calculated MW**

45kDa

**Category**

Polyclonal Antibody

**Applications**

WB

**Cross-Reactivity**

Human, Mouse

### Background

Casein kinase II is a serine/threonine protein kinase that phosphorylates acidic proteins such as casein. It is involved in various cellular processes, including cell cycle control, apoptosis, and circadian rhythm. The kinase exists as a tetramer and is composed of an alpha, an alpha-prime, and two beta subunits. The alpha subunits contain the catalytic activity while the beta subunits undergo autophosphorylation. The protein encoded by this gene represents the alpha subunit. Multiple transcript variants encoding different protein isoforms have been found for this gene.

### Recommended Dilutions

WB 1:500 - 1:1000

### Immunogen Information

**Gene ID**

1457

**Swiss Prot**

P68400

**Immunogen**

A synthetic peptide of human Casein Kinase 2 alpha (CSNK2A1)

**Synonyms**

CKII; Cka1; Cka2; CK2A1; OCNDS; Casein Kinase 2 alpha (CSNK2A1)

### Contact



[www.abclonal.com](http://www.abclonal.com)

### Product Information

**Source**

Rabbit

**Isotype**

IgG

**Purification**

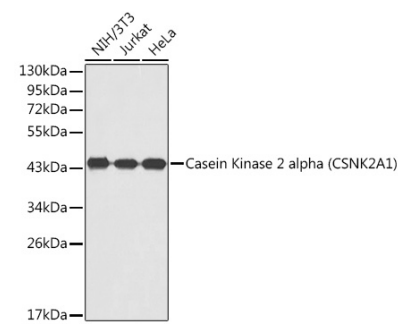
Affinity purification

**Storage**

Store at 4°C. Avoid freeze / thaw cycles.

Buffer: PBS with 0.02% sodium azide, pH7.3.

# Validation Data



Western blot analysis of extracts of various cell lines, using Casein Kinase 2 alpha (CSNK2A1) antibody (A0435).  
Secondary antibody: HRP Goat Anti-Rabbit IgG (H+L) (AS014) at 1:10000 dilution.  
Lysates/proteins: 25µg per lane.  
Blocking buffer: 3% nonfat dry milk in TBST.