

A0126

Leader in Biomolecular Solutions for Life Science



## Pin1 Mouse mAb

Catalog No.: A0126

### Basic Information

#### Observed MW

18kDa

#### Calculated MW

18kDa

#### Category

SMab Recombinant Monoclonal Antibody

#### Applications

WB, ELISA

#### Cross-Reactivity

Human

### Background

Peptidyl-prolyl cis/trans isomerases (PPlases) catalyze the cis/trans isomerization of peptidyl-prolyl peptide bonds. This gene encodes one of the PPlases, which specifically binds to phosphorylated ser/thr-pro motifs to catalytically regulate the post-phosphorylation conformation of its substrates. The conformational regulation catalyzed by this PPlase has a profound impact on key proteins involved in the regulation of cell growth, genotoxic and other stress responses, the immune response, induction and maintenance of pluripotency, germ cell development, neuronal differentiation, and survival. This enzyme also plays a key role in the pathogenesis of Alzheimer's disease and many cancers. Multiple alternatively spliced transcript variants have been found for this gene.

### Recommended Dilutions

WB 1:500 - 1:1000

### Immunogen Information

#### Gene ID

5300

#### Swiss Prot

Q13526

#### Immunogen

A synthetic peptide of human Pin1

#### Synonyms

DOD; UBL5; Pin1

### Contact



[www.abclonal.com](http://www.abclonal.com)

### Product Information

#### Source

Mouse

#### Isotype

IgG

#### Purification

Affinity purification

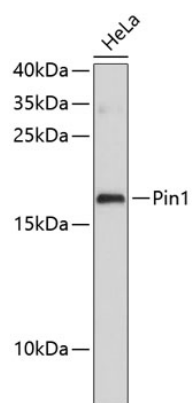
#### Storage

Store at 4°C. Avoid freeze / thaw cycles.

Buffer: PBS with 0.02% sodium azide, pH 7.3.

## Validation Data

---



Western blot analysis of lysates from HeLa cells, using Pin1 Mouse mAb (A0126).  
Secondary antibody: HRP Goat Anti-Mouse IgG (H+L) (AS003) at 1:10000 dilution.  
Lysates/proteins: 25µg per lane.  
Blocking buffer: 3% nonfat dry milk in TBST.