

A0074

Leader in Biomolecular Solutions for Life Science



## PTK2B Rabbit pAb

Catalog No.: A0074

### Basic Information

#### Observed MW

116kDa

#### Calculated MW

116kDa

#### Category

Polyclonal Antibody

#### Applications

WB, IF/ICC

#### Cross-Reactivity

Human

### Background

This gene encodes a cytoplasmic protein tyrosine kinase which is involved in calcium-induced regulation of ion channels and activation of the map kinase signaling pathway. The encoded protein may represent an important signaling intermediate between neuropeptide-activated receptors or neurotransmitters that increase calcium flux and the downstream signals that regulate neuronal activity. The encoded protein undergoes rapid tyrosine phosphorylation and activation in response to increases in the intracellular calcium concentration, nicotinic acetylcholine receptor activation, membrane depolarization, or protein kinase C activation. This protein has been shown to bind CRK-associated substrate, nephrocystin, GTPase regulator associated with FAK, and the SH2 domain of GRB2. The encoded protein is a member of the FAK subfamily of protein tyrosine kinases but lacks significant sequence similarity to kinases from other subfamilies. Four transcript variants encoding two different isoforms have been found for this gene.

### Recommended Dilutions

WB 1:500 - 1:2000

IF/ICC 1:20 - 1:50

### Immunogen Information

#### Gene ID

2185

#### Swiss Prot

Q14289

#### Immunogen

A synthetic peptide of human PTK2B

#### Synonyms

PKB; PTK; CAKB; FAK2; PYK2; CADTK; FADK2; RAFTK; PTK2B

### Contact



[www.abclonal.com](http://www.abclonal.com)

### Product Information

#### Source

Rabbit

#### Isotype

IgG

#### Purification

Affinity purification

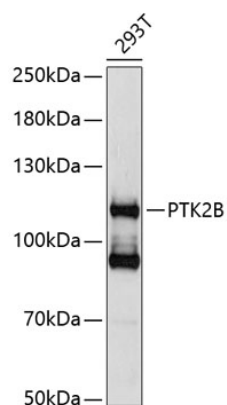
#### Storage

Store at 4°C. Avoid freeze / thaw cycles.

Buffer: PBS with 0.02% sodium azide, pH7.3.

## Validation Data

---



Western blot analysis of extracts of 293T cells, using PTK2B antibody (A0074) at 1:1000 dilution.  
Secondary antibody: HRP Goat Anti-Rabbit IgG (H+L) (A5014) at 1:10000 dilution.  
Lysates/proteins: 25µg per lane.  
Blocking buffer: 3% nonfat dry milk in TBST.  
Detection: ECL Basic Kit (RM00020).  
Exposure time: 1s.