

# GRB2 Rabbit pAb

Catalog No.: A0039

## Basic Information

### Observed MW

24kDa

### Calculated MW

25kDa

### Category

Primary antibody

### Applications

WB

### Cross-Reactivity

Human

## Background

The protein encoded by this gene binds the epidermal growth factor receptor and contains one SH2 domain and two SH3 domains. Its two SH3 domains direct complex formation with proline-rich regions of other proteins, and its SH2 domain binds tyrosine phosphorylated sequences. This gene is similar to the Sem5 gene of *C.elegans*, which is involved in the signal transduction pathway. Two alternatively spliced transcript variants encoding different isoforms have been found for this gene.

## Recommended Dilutions

WB 1:500 - 1:2000

## Immunogen Information

### Gene ID

2885

### Swiss Prot

P62993

### Immunogen

A synthetic peptide of human GRB2

### Synonyms

ASH; Grb3-3; MST084; NCKAP2; MSTP084; EGFRBP-GRB2; GRB2

## Contact

 | [www.abclonal.com](http://www.abclonal.com)

## Product Information

### Source

Rabbit

### Isotype

IgG

### Purification

Affinity purification

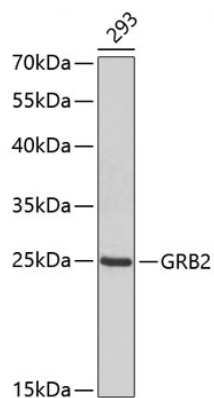
### Storage

Store at 4°C. Avoid freeze / thaw cycles.

Buffer: PBS with 0.02% sodium azide, pH7.3.

## Validation Data

---



Western blot analysis of lysates from 293T cells, using GRB2 Rabbit pAb (A0039).  
Secondary antibody: HRP Goat Anti-Rabbit IgG (H+L) (A5014) at 1:10000 dilution.  
Lysates/proteins: 25µg per lane.  
Blocking buffer: 3% nonfat dry milk in TBST.