

A0011

Leader in Biomolecular Solutions for Life Science



CREB1 Rabbit pAb

Catalog No.: A0011

1 Publications

Basic Information

Observed MW

38kDa

Calculated MW

35kDa

Category

Polyclonal Antibody

Applications

WB

Cross-Reactivity

Human, Mouse, Rat

Background

This gene encodes a transcription factor that is a member of the leucine zipper family of DNA binding proteins. This protein binds as a homodimer to the cAMP-responsive element, an octameric palindrome. The protein is phosphorylated by several protein kinases, and induces transcription of genes in response to hormonal stimulation of the cAMP pathway. Alternate splicing of this gene results in several transcript variants encoding different isoforms.

Recommended Dilutions

WB 1:1000 - 1:4000

Immunogen Information

Gene ID

1385

Swiss Prot

P16220

Immunogen

A synthetic peptide of human CREB1

Synonyms

CREB; CREB-1; CREB1

Contact



www.abclonal.com

Product Information

Source

Rabbit

Isotype

IgG

Purification

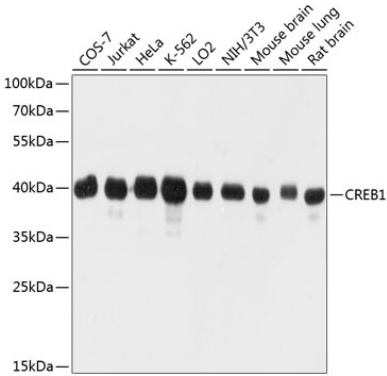
Affinity purification

Storage

Store at -20°C. Avoid freeze / thaw cycles.

Buffer: PBS with 0.02% sodium azide, 50% glycerol, pH7.3.

Validation Data



Western blot analysis of various lysates using CREB1 Rabbit pAb (A0011) at 1:1000 dilution. Secondary antibody: HRP Goat Anti-Rabbit IgG (H+L) (AS014) at 1:10000 dilution. Lysates/proteins: 25μg per lane. Blocking buffer: 3% nonfat dry milk in TBST. Detection: ECL Basic Kit (RM00020). Exposure time: 10s.