

# Recombinant Human CD26 Protein

Catalog No.: RP02146 **Recombinant**

## Sequence Information

Species	Gene ID	Swiss Prot
Human	1803	P27487

### Tags

C-6xHis

### Synonyms

ADABP; ADCP2; CD26; DPPIV;  
TP103; DPP4; ADCP2; CD26; DPPIV; TP103

## Product Information

Source	Purification
Mammalian	> 95% by SDS-PAGE.

### Endotoxin

&lt; 1 EU/μg of the protein by LAL method.

### Formulation

Lyophilized from a 0.2 μm filtered solution of PBS, pH 7.4. Contact us for customized product form or formulation.

### Reconstitution

Reconstitute to a concentration of 0.1-0.5 mg/mL in sterile distilled water.

## Background

CD26 is a signal-anchor for type II membrane protein that belongs to the peptidase S9B family. CD26 is expressed specifically in lymphatic vessels but not in blood vessels in the skin, small intestine, esophagus, ovary, breast and prostate glands. It acts as a positive regulator of T-cell coactivation, by binding at least ADA, CAV1, IGF2R, and PTPRC. Its binding to CAV1 and CARD11 induces T-cell proliferation and NF-kappa-B activation in a T-cell receptor/CD3-dependent manner. Its interaction with ADA also regulates lymphocyte-epithelial cell adhesion. In association with FAP is involved in the pericellular proteolysis of the extracellular matrix (ECM), the migration and invasion of endothelial cells into the ECM. It may be involved in the promotion of lymphatic endothelial cells adhesion, migration and tube formation. When overexpressed, it enhanced cell proliferation, a process inhibited by GPC3. It acts also as a serine exopeptidase with a dipeptidyl peptidase activity that regulates various physiological processes by cleaving peptides in the circulation, including many chemokines, mitogenic growth factors, neuropeptides and peptide hormones.

## Basic Information

### Description

Recombinant Human CD26 Protein is produced by Mammalian expression system. The target protein is expressed with sequence (Asn29-Pro766) of human CD26 (Accession #P27487) fused with a 6xHis tag at the C-terminus.

### Bio-Activity

### Storage

Store the lyophilized protein at -20°C to -80°C for long term.

After reconstitution, the protein solution is stable at -20°C for 3 months, at 2-8°C for up to 1 week.

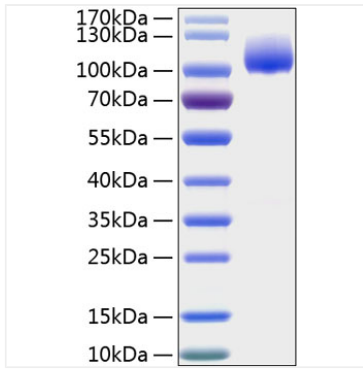
Avoid repeated freeze/thaw cycles.

## Contact

 | [www.abclonal.com](http://www.abclonal.com)

## Validation Data

---



Recombinant Human CD26 Protein was determined by SDS-PAGE with Coomassie Blue, showing a band at 90-130kDa.