

Recombinant Cynomolgus CD3E&CD3D Protein

Catalog No.: RP02061LQ **Recombinant**

Sequence Information

Species	Gene ID	Swiss Prot
Cynomolgus		Q95LI5.2 & Q95LI8

Tags

Supplied as 0.22um filtered solution in PBS, pH 7.4. Contact us for customized product form or formulation.

Synonyms

Product Information

Source	Purification
Mammalian	> 95% by SDS-PAGE.

Endotoxin

< 0.1 EU/μg of the protein by LAL method.

Formulation

Supplied as 0.22um filtered solution in PBS, pH 7.4. Contact us for customized product form or formulation.

Reconstitution

Background

T-cell surface glycoprotein CD3 epsilon & CD3 delta chain, also known as CD3E & CD3D, are single-pass type I membrane proteins. When antigen presenting cells (APCs) activate T-cell receptor (TCR), TCR-mediated signals are transmitted across the cell membrane by the CD3 chains CD3D, CD3E, CD3G and CD3Z. All CD3 chains contain immunoreceptor tyrosine-based activation motifs (ITAMs) in their cytoplasmic domain.

Basic Information

Description

Bio-Activity

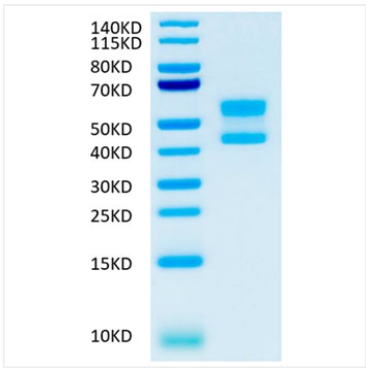
Storage

This product is stable at $\leq -70^{\circ}\text{C}$ for up to 1 year from the date of receipt. For optimal storage, aliquot into smaller quantities after centrifugation and store at recommended temperature. Avoid repeated freeze/thaw cycles.

Contact

 | www.abclonal.com

Validation Data



Recombinant Cynomolgus CD3E&CD3D Protein was determined by SDS-PAGE with Coomassie Blue, showing bands at 58-62 kDa and 44-46 kDa.