

Recombinant Human CD3 epsilon & CD3 gamma Heterodimer Protein

Catalog No.: RP02025LQ **Recombinant**

Sequence Information

Species	Gene ID	Swiss Prot
Human	916/917	P07766 & P09693

Tags

Supplied as 0.22um filtered solution in PBS, pH 7.4. Contact us for customized product form or formulation.

Synonyms

IMD18; T3E; TCRE; CD3-GAMMA; IMD17; T3G

Product Information

Source	Purification
Mammalian	> 95% by SDS-PAGE.

Endotoxin

< 0.1 EU/μg of the protein by LAL method.

Formulation

Supplied as 0.22um filtered solution in PBS, pH 7.4. Contact us for customized product form or formulation.

Reconstitution

Background

T-cell surface glycoprotein CD3 epsilon & CD3 gamma chain, also known as CD3E & CD3G, are single-pass type I membrane proteins. When antigen presenting cells (APCs) activate T-cell receptor (TCR), TCR-mediated signals are transmitted across the cell membrane by the CD3 chains CD3D, CD3E, CD3G and CD3Z. All CD3 chains contain immunoreceptor tyrosine-based activation motifs (ITAMs) in their cytoplasmic domain.

Basic Information

Description

Bio-Activity

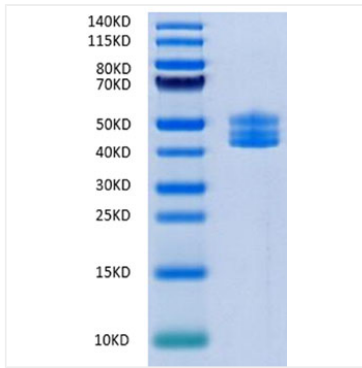
Immobilized Human CD3 epsilon & CD3 gamma Heterodimer Protein at 0.5ug/mL (100μL/well), dose response curve for Anti-hCD3e mAb with the EC₅₀ of 1.22 ug/mL determined by ELISA

Storage

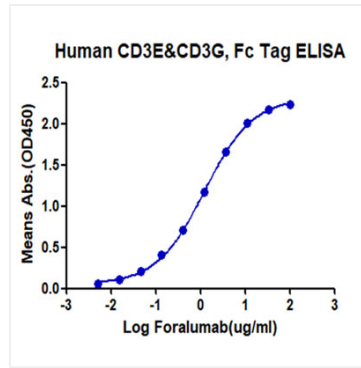
This product is stable at ≤ -70° C for up to 1 year from the date of receipt. For optimal storage, aliquot into smaller quantities after centrifugation and store at recommended temperature. Avoid repeated freeze/thaw cycles.

Contact

Validation Data



Recombinant Human CD3 epsilon & CD3 gamma Heterodimer Protein was determined by SDS-PAGE with Coomassie Blue, showing a band at 40-60 kDa.



Immobilized Human CD3 epsilon & CD3 gamma Heterodimer Protein at 0.5ug/mL (100µL/well), dose response curve for Anti-hCD3e mAb with the EC₅₀ of 1.22 ug/mL determined by ELISA