

# Recombinant Human BTLA Protein

Catalog No.: RP02018LQ **Recombinant**

## Sequence Information

Species	Gene ID	Swiss Prot
Human	151888	Q7Z6A9

### Tags

Supplied as 0.22um filtered solution in PBS, pH 7.4. Contact us for customized product form or formulation.

### Synonyms

BTLA1; CD272

## Product Information

Source	Purification
Mammalian	> 95% by SDS-PAGE.

### Endotoxin

< 0.1 EU/μg of the protein by LAL method.

### Formulation

Supplied as 0.22um filtered solution in PBS, pH 7.4. Contact us for customized product form or formulation.

### Reconstitution

## Background

B- and T-lymphocyte attenuator (BTLA; CD272) is a 35 kDa type I transmembrane glycoprotein in the CD28 family of T cell costimulatory molecules. BTLA is an inhibitory receptor on lymphocytes that negatively regulates antigen receptor signaling via PTPN6/SHP-1 and PTPN11/SHP-2. BTLA may interact in cis (on the same cell) or in trans (on other cells) with TNFRSF14.

## Basic Information

### Description

### Bio-Activity

Immobilized Human BTLA at 0.5ug/mL (100μL/well), dose response curve for Human HVEM, Fc Tag with the EC<sub>50</sub> of 0.1ug/mL determined by ELISA.

### Storage

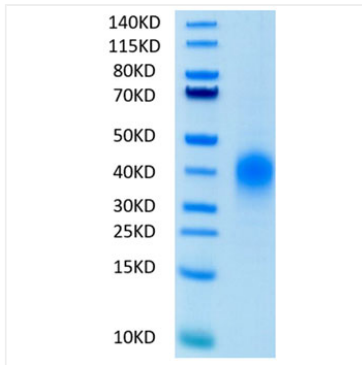
This product is stable at ≤ -70° C for up to 1 year from the date of receipt. For optimal storage, aliquot into smaller quantities after centrifugation and store at recommended temperature. Avoid repeated freeze/thaw cycles.

## Contact

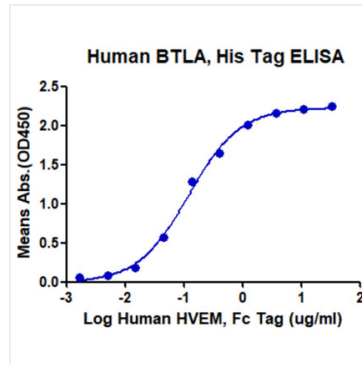
 | [www.abclonal.com](http://www.abclonal.com)

## Validation Data

---



Recombinant Human BTLA Protein was determined by SDS-PAGE with Coomassie Blue, showing a band at 35-45 kDa.



Immobilized Human BTLA at 0.5ug/mL (100 $\mu$ L/well), dose response curve for Human HVEM,Fc Tag with the EC<sub>50</sub> of 0.1ug/mL determined by ELISA.