

RP01241LQ

Leader in Biomolecular Solutions for Life Science



# Recombinant Human Catenin beta-1 Protein

Catalog No.: RP01241LQ **Recombinant**

## Sequence Information

Species	Gene ID	Swiss Prot
Human	1499	P35222-1

### Tags

C-His

### Synonyms

CTNNB; MRD19;  
armadillo;CTNNB1;MRD19;armadillo;beta  
Catenin; CTNNB; catenin beta-1

## Product Information

Source	Purification
<math>E. coli</math>	> 92% by SDS- PAGE.

### Endotoxin

<math>< 0.1</math> EU/<math>\mu\text{g}</math> of the protein by LAL method.

### Formulation

Supplied as a 0.22 <math>\mu\text{m}</math> filtered solution in 20mM Hepes,150mM NaCl, 10% Glycerol, 5mM DTT,pH 7.5.Contact us for customized product form or formulation.

### Reconstitution

## Background

### Basic Information

#### Description

Recombinant Human Catenin beta-1 Protein is produced by <math>E. coli</math> expression system. The target protein is expressed with sequence (Met1-Leu781) of human Beta-catenin (Accession #XP\_016861227.1) fused with a 6<math>\times</math>His tag at the C-terminus.

#### Bio-Activity

1.Measured by its binding ability in a functional ELISA.Immobilized Human CD31 at 1 <math>\mu\text{g}/\text{mL}</math> (100 <math>\mu\text{L}/\text{well}</math>) can bind Human CTNNB1 with a linear range of 0.2-1.5 <math>\mu\text{g}/\text{mL}</math>.|2.Measured by its binding ability in a functional ELISA.Immobilized Human CDH1 at 1 <math>\mu\text{g}/\text{mL}</math> (100 <math>\mu\text{L}/\text{well}</math>) can bind Human CTNNB1 with a linear range of 0.1-0.78 <math>\mu\text{g}/\text{mL}</math>.

#### Storage

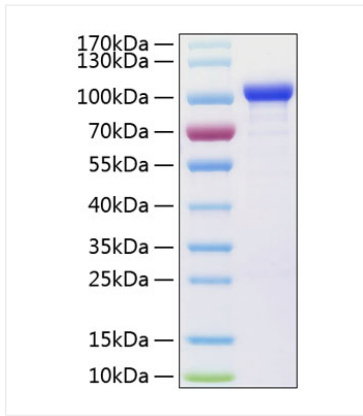
This product is stable at <math>\leq -70^{\circ}\text{C}</math> for up to 1 year from the date of receipt.<br>For optimal storage, aliquot into smaller quantities after centrifugation and store at recommended temperature.  
Avoid repeated freeze/thaw cycles.

## Contact

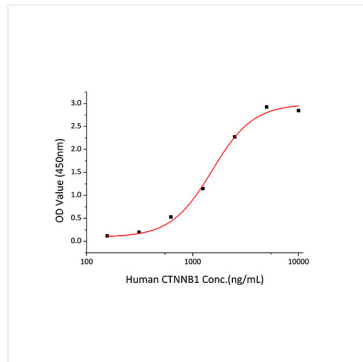


[www.abclonal.com](http://www.abclonal.com)

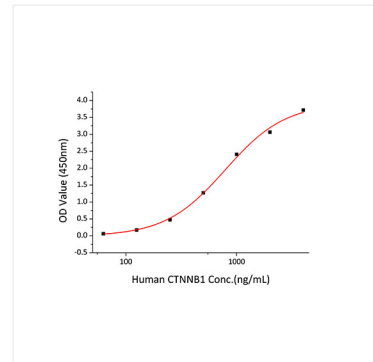
## Validation Data



Recombinant Human Catenin beta-1 Protein was determined by SDS-PAGE with Coomassie Blue, showing a band at 100-110 kDa.



Immobilized recombinant Human CD31 at 1  $\mu\text{g/mL}$  (100  $\mu\text{L/well}$ ) can bind Human CTNNB1 with a linear range of 0.2-1.5 $\mu\text{g/mL}$ .



Immobilized recombinant Human CDH1 at 1  $\mu\text{g/mL}$  (100  $\mu\text{L/well}$ ) can bind Human CTNNB1 with a linear range of 0.1-0.78 $\mu\text{g/mL}$ .