

RP01199

Leader in Biomolecular Solutions for Life Science



Recombinant Human Siglec-2/CD22 Protein

Catalog No.: RP01199

Recombinant

Sequence Information

Species	Gene ID	Swiss Prot
Human	933	P20273

Tags

C-hFc&His

Synonyms

CD22; SIGLEC-2; SIGLEC2; CD22 molecule;SIGLEC-2;SIGLEC2

Product Information

Source	Purification
HEK293 cells	> 95% by SDS-PAGE.

Endotoxin

< 0.1 EU/μg of the protein by LAL method.

Formulation

Lyophilized from a 0.22 μm filtered solution of PBS, pH 7.4. Contact us for customized product form or formulation.

Reconstitution

Centrifuge the vial before opening. Reconstitute to a concentration of 0.1-0.5 mg/mL in sterile distilled water. Avoid vortex or vigorously pipetting the protein. For long term storage, it is recommended to add a carrier protein or stabilizer (e.g. 0.1% BSA, 5% HSA, 10% FBS or 5% Trehalose), and aliquot the reconstituted protein solution to minimize freeze-thaw cycles.

Contact



www.abclonal.com

Background

Basic Information

Description

Recombinant Human Siglec-2/CD22 Protein is produced by HEK293 cells expression system. The target protein is expressed with sequence (Asp20-Arg687) of human Siglec-2/CD22 (Accession #NP_001762.2) fused with a Fc, 6×His tag at the C-terminus.

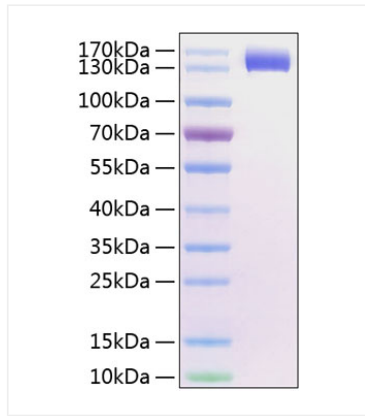
Bio-Activity

Measured by its binding ability in a functional ELISA. Immobilized Human CD22 (Catalog: RP01199) at 0.5 μg/mL (100 μL/well) can bind anti CD22 Rabbit mAb with a linear range of 0.01-1.28ng/mL.

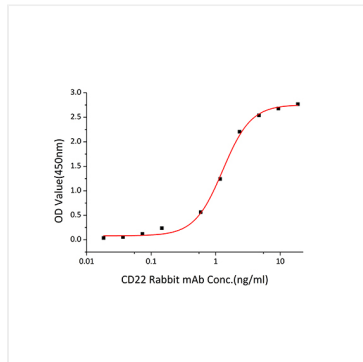
Storage

Store the lyophilized protein at -20°C to -80 °C for long term. After reconstitution, the protein solution is stable at -20 °C for 3 months, at 2-8 °C for up to 1 week. Avoid repeated freeze/thaw cycles.

Validation Data



Recombinant Human Siglec-2/CD22 Protein was determined by SDS-PAGE with Coomassie Blue, showing a band at 130-150 kDa.



Immobilized Human CD22 (Catalog: RP01199) at 0.5 $\mu\text{g/mL}$ (100 $\mu\text{L/well}$) can bind anti CD22 Rabbit mAb with a linear range of 0.01-1.28 ng/mL.