

Recombinant Human SDC1 Protein

Catalog No.: RP01099 **Recombinant**

Sequence Information

Species	Gene ID	Swiss Prot
Human	6382	P18827

Tags

C-6×His

Synonyms

Syndecan-1; SYND1; CD138; SDC1; SDC

Product Information

Source	Purification
Mammalian	> 95% by SDS-PAGE.

Endotoxin

< 1.0 EU/μg of the protein by LAL method.

Formulation

Lyophilized from a 0.22 μm filtered solution of PBS, pH7.4. Contact us for customized product form or formulation.

Reconstitution

Reconstitute to a concentration of 0.1-0.5 mg/mL in sterile distilled water.

Background

This protein is a transmembrane (type I) heparan sulfate proteoglycan and is a member of the syndecan proteoglycan family. The syndecans mediate cell binding, cell signaling, and cytoskeletal organization and syndecan receptors are required for internalization of the HIV-1 tat protein. The syndecan-1 protein functions as an integral membrane protein and participates in cell proliferation, cell migration and cell-matrix interactions via its receptor for extracellular matrix proteins. Altered syndecan-1 expression has been detected in several different tumor types. While several transcript variants may exist for this gene, the full-length nature of only two have been described to date. These two represent the major variants of this gene and encode the same protein.

Basic Information

Description

Recombinant Human SDC1 Protein is produced by Mammalian expression system. The target protein is expressed with sequence (Gln23-Glu251) of human SDC1 (Accession #P18827) fused with a 6×His tag at the C-terminus.

Bio-Activity

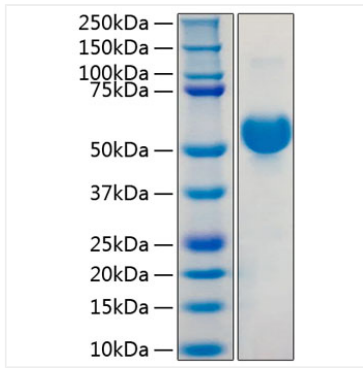
Storage

Store the lyophilized protein at -20°C to -80 °C for long term. After reconstitution, the protein solution is stable at -20 °C for 3 months, at 2-8 °C for up to 1 week. Avoid repeated freeze/thaw cycles.

Contact

 | www.abclonal.com

Validation Data



Recombinant Human SDC1 Protein was determined by SDS-PAGE with Coomassie Blue, showing a band at 45-60 kDa.