

Recombinant Human CTLA-4 Protein

Catalog No.: RP01044 **Recombinant**

Sequence Information

Species	Gene ID	Swiss Prot
Human	1493	P16410

Tags

C-6×His

Synonyms

ALP55;CD;CD152;CELIAC3;CTLA-4;GRD4;GSE;IDDM12

Product Information

Source	Purification
HEK293 cells	> 90% by SDS-PAGE.

Endotoxin

< 1.0 EU/μg of the protein by LAL method.

Formulation

Lyophilized from a 0.22 μm filtered solution of PBS, pH 7.4. Contact us for customized product form or formulation.

Reconstitution

Reconstitute to a concentration of 0.1-0.5 mg/mL in sterile distilled water.

Background

Basic Information

Description

Recombinant Human CTLA-4 Protein is produced by HEK293 cells expression system. The target protein is expressed with sequence (Ala37-Phe162) of human CTLA-4 (Accession #NP_005205.2) fused with a 6×His tag at the C-terminus.

Bio-Activity

Measured by its binding ability in a functional ELISA. Immobilized Ipilimumab at 1 μg/mL (100 μL/well) can bind Recombinant Human CTLA-4 with a linear range of 6-18 ng/mL.

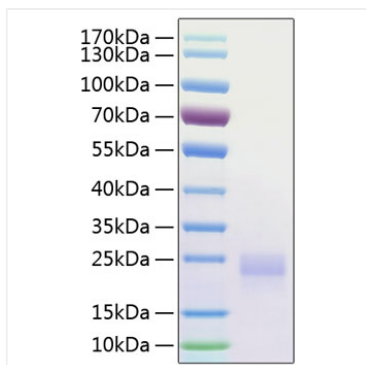
Storage

Store the lyophilized protein at -20°C to -80 °C for long term. After reconstitution, the protein solution is stable at -20 °C for 3 months, at 2-8 °C for up to 1 week. Avoid repeated freeze/thaw cycles.

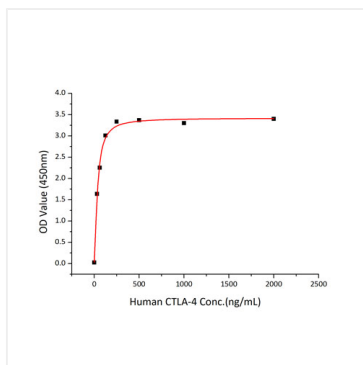
Contact

 | www.abclonal.com

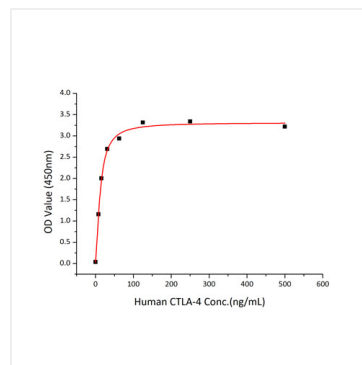
Validation Data



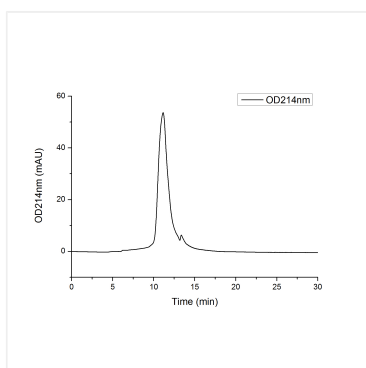
Recombinant Human CTLA-4 Protein was determined by SDS-PAGE with Coomassie Blue, showing a band at 25 kDa.



Immobilized Recombinant Mouse CD86 at 2 $\mu\text{g/mL}$ (100 $\mu\text{L/well}$) can bind Recombinant Human CTLA-4 with a linear range of 15-50 ng/mL.



Immobilized Ipilimumab at 1 $\mu\text{g/mL}$ (100 $\mu\text{L/well}$) can bind Recombinant Human CTLA-4 with a linear range of 6-18 ng/mL.



The purity of Human CTLA-4 Protein (Cat.RP01044) was greater than 90% as determined by SEC-HPLC.