

Recombinant Human HGF receptor/c-MET/MET Protein

Catalog No.: RP01041 **Recombinant**

Sequence Information

Species	Gene ID	Swiss Prot
Human	4233	P08581

Tags

C-His

Synonyms

HGFR; AUTS9; RCCP2; c-Met;
DFNB97; MET; HGFR; hepatocyte
growth factor
receptor; AUTS9; DFNB97; RCCP2; c-Met

Product Information

Source	Purification
HEK293 cells	> 95% by SDS- PAGE.

Endotoxin

< 0.1 EU/μg of the protein by LAL
method.

Formulation

Lyophilized from a 0.22 μm filtered
solution of PBS, pH 7.4. Contact us for
customized product form or
formulation.

Reconstitution

Centrifuge the vial before opening.
Reconstitute to a concentration of
0.1-0.5 mg/mL in sterile distilled water.
Avoid vortex or vigorously pipetting the
protein. For long term storage, it is
recommended to add a carrier protein
or stabilizer (e.g. 0.1% BSA, 5% HSA,
10% FBS or 5% Trehalose), and aliquot
the reconstituted protein solution to
minimize freeze-thaw cycles.

Contact

 | www.abclonal.com

Background

Hepatocyte growth factor receptor (HGFR), also known as c-Met or mesenchymal-epithelial transition factor (MET), is a glycosylated receptor tyrosine kinase (RTK) that has been shown to be overexpressed and/or mutated in a variety of malignancies. Normal HGF/HGFR signaling is essential for embryonic development, tissue repair or wound healing, whereas aberrantly active HGFR has been strongly implicated in tumorigenesis, particularly in the development of invasive and metastatic phenotypes. HGFR protein is a multifaceted regulator of growth, motility, and invasion, and is normally expressed by cells of epithelial origin.

Basic Information

Description

Recombinant Human HGF receptor/c-MET/MET Protein is produced by HEK293 cells expression system. The target protein is expressed with sequence (Glu25-Thr932) of human HGF R/c-MET (Accession #NP_000236.2) fused with a 6×His tag at the C-terminus.

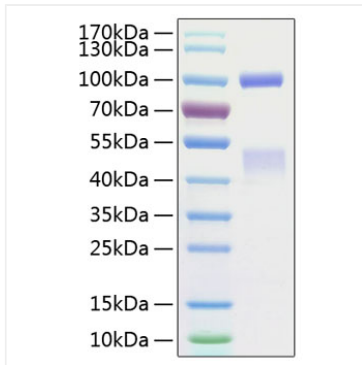
Bio-Activity

Measured by its binding ability in a functional ELISA. Immobilized recombinant human HGFR at 2 μg/mL (100 μL/well) can bind Recombinant human HGF with a linear range of 25-250 ng/mL.

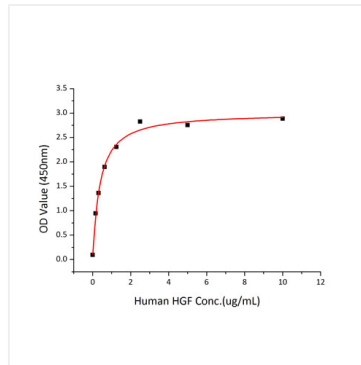
Storage

Store the lyophilized protein at -20°C to -80 °C for long term.
After reconstitution, the protein solution is stable at -20 °C for 3 months, at 2-8 °C for up to 1 week.
Avoid repeated freeze/thaw cycles.

Validation Data



Recombinant Human HGF receptor/c-MET/MET Protein was determined by SDS-PAGE with Coomassie Blue, showing bands at 50&100 kDa.



Immobilized recombinant human HGFR at 2 $\mu\text{g/mL}$ (100 μL /well) can bind Recombinant human HGF with a linear range of 25-250 ng/mL.