

Recombinant Human CXCL12/SDF-1/PBSF Protein

Catalog No.: RP00832 **Recombinant**

Sequence Information

Species	Gene ID	Swiss Prot
Human	6387	P48061

Tags

No tag

Synonyms

CXCL12;IRH;PBSF;SCYB12;SDF1;TLSF;T
PAR1

Product Information

Source	Purification
<i>E. coli</i>	> 95% by SDS- PAGE.

Endotoxin

< 1 EU/μg of the protein by LAL
method.

Formulation

Lyophilized from a 0.2 μm filtered
solution of 20mM PB, 150mM NaCl,
pH7.2. Contact us for customized
product form or formulation.

Reconstitution

Reconstitute to a concentration of
0.1-0.5 mg/mL in sterile distilled water.

Background

Basic Information

Description

Recombinant Human CXCL12/SDF-1/PBSF Protein is produced by *E. coli* expression system. The target protein is expressed with sequence (Ser19-Met93) of human CXCL12/SDF-1 beta (Accession #P48061).

Bio-Activity

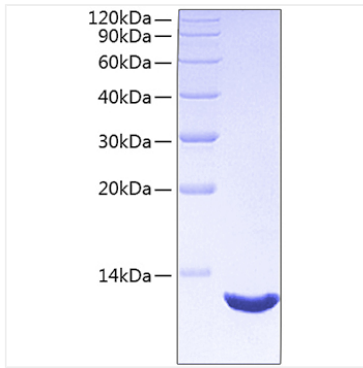
Storage

Store the lyophilized protein at -20°C to -80 °C for long term.
After reconstitution, the protein solution is stable at -20 °C for 3 months, at 2-8 °C for up to 1 week.
Avoid repeated freeze/thaw cycles.

Contact

 | www.abclonal.com

Validation Data



Recombinant Human CXCL12/SDF-1/PBSF Protein was determined by SDS-PAGE under reducing conditions with Coomassie Blue.