

Recombinant Human CCL28 Protein

Catalog No.: RP00831 **Recombinant**

Sequence Information

Species	Gene ID	Swiss Prot
Human	56477	Q9NRJ3

Tags

No tag

Synonyms

CCL28;CCK1;MEC;SCYA28

Product Information

Source	Purification
<i>E. coli</i>	> 95% by SDS-PAGE.

Endotoxin

< 1 EU/μg of the protein by LAL method.

Formulation

Lyophilized from a 0.2 μm filtered solution of 20mM PB, 150mM NaCl, pH7.2. Contact us for customized product form or formulation.

Reconstitution

Reconstitute to a concentration of 0.1-0.5 mg/mL in sterile distilled water.

Background

Basic Information

Description

Recombinant Human CCL28 Protein is produced by *E. coli* expression system. The target protein is expressed with sequence (Ile20-Tyr127) of human CCL28 (Accession #Q9NRJ3).

Bio-Activity

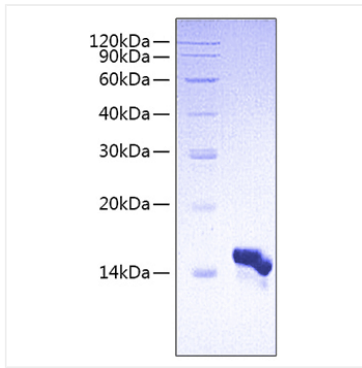
Storage

Store the lyophilized protein at -20°C to -80 °C for long term. After reconstitution, the protein solution is stable at -20 °C for 3 months, at 2-8 °C for up to 1 week. Avoid repeated freeze/thaw cycles.

Contact

 | www.abclonal.com

Validation Data



Recombinant Human CCL28 Protein was determined by SDS-PAGE under reducing conditions with Coomassie Blue.