

# Recombinant Human CD38/ADP-ribosyl Cyclase 1 Protein

Catalog No.: RP00794 **Recombinant**

## Sequence Information

Species	Gene ID	Swiss Prot
Human	952	P28907

### Tags

C-Fc

### Synonyms

CD38;ADPRC 1;ADPRC1

## Product Information

Source	Purification
HEK293 cells	> 95% by SDS-PAGE.

### Endotoxin

< 1 EU/μg of the protein by LAL method.

### Formulation

Lyophilized from a 0.2 μm filtered solution of PBS, pH7.4. Contact us for customized product form or formulation.

### Reconstitution

Reconstitute to a concentration of 0.1-0.5 mg/mL in sterile distilled water.

## Background

CD38, also called ADP-ribosyl cyclase, is a Type II integral membrane protein with 301 amino acids in length that belongs to the ADP-ribosyl cyclase family. It synthesizes the second messengers cyclic ADP-ribose and nicotinate-adenine dinucleotide phosphate, the former a second messenger for glucose-induced insulin secretion. And also moonlights as a receptor in cells of the immune system. CD38 is expressed in B and T lymphocytes, osteoclasts, and in cardiac, pancreatic, liver and kidney cells. Through its production of cyclic ADP-ribose, CD38 modulates calcium-mediated signal transduction in many types of cells, including neutrophils and pancreatic beta cells.

## Basic Information

### Description

Recombinant Human CD38/ADP-ribosyl Cyclase 1 Protein is produced by Human Cells expression system. The target protein is expressed with sequence (Val43-Ile300) of human CD38/ADP-ribosyl Cyclase 1 (Accession #P28907) fused with an Fc tag at the C-terminus.

### Bio-Activity

### Storage

Store the lyophilized protein at -20°C to -80 °C for long term.

After reconstitution, the protein solution is stable at -20 °C for 3 months, at 2-8 °C for up to 1 week.

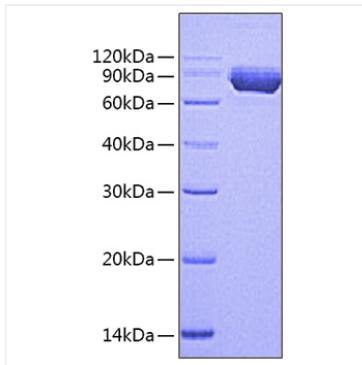
Avoid repeated freeze/thaw cycles.

## Contact

 | [www.abclonal.com](http://www.abclonal.com)

## Validation Data

---



Recombinant Human CD38/ADP-ribosyl Cyclase 1 Protein was determined by SDS-PAGE under reducing conditions with Coomassie Blue.