

Recombinant *Vibrio cholerae* Toxin B Protein

Catalog No.: RP00661 **Recombinant**

Sequence Information

Species	Gene ID	Swiss Prot
Vibrio cholerae	2613962	P01556

Tags

No tag

Synonyms

Cholera enterotoxin subunit B; Cholera enterotoxin B chain; Cholera enterotoxin gammachain; Cholera genoid; ctxB; toxB

Product Information

Source	Purification
<i>E. coli</i>	> 95% by SDS-PAGE.

Endotoxin

< 1 EU/μg of the protein by LAL method.

Formulation

Lyophilized from a 0.2 μM filtered solution of 50mM Tris, 200uM NaCl, pH8.0 Contact us for customized product form or formulation.

Reconstitution

Reconstitute to a concentration of 0.1-0.5 mg/mL in 1X PBS.

Background

Cholera toxin is protein complex secreted by the bacterium *Vibrio cholerae*. It is responsible for the massive, watery diarrhea characteristic of cholera infection. Cholera enterotoxin subunit B (CTXB) pentameric ring directs the A subunit to its target by binding to the GM1 gangliosides present on the surface of the intestine epithelial cells. It can bind five GM1 gangliosides. It has no toxic activity by itself.

Basic Information

Description

Recombinant *Vibrio cholerae* Toxin B Protein is produced by *E. coli* expression system. The target protein is expressed with sequence (Thr22-Asn124) of *vibrio cholerae* Toxin B (Accession #P01556) fused with an initial Met at the N-terminus.

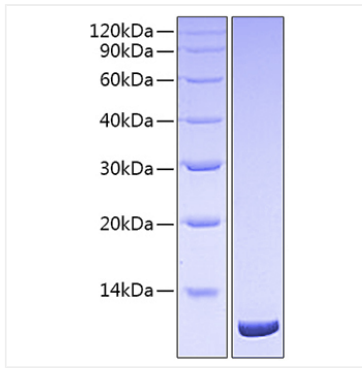
Bio-Activity

Storage

Store the lyophilized protein at -20°C to -80 °C for long term. After reconstitution, the protein solution is stable at -20 °C for 3 months, at 2-8 °C for up to 1 week. Avoid repeated freeze/thaw cycles.

Contact

Validation Data



Recombinant *Vibrio cholerae* Toxin B Protein was determined by SDS-PAGE under reducing conditions with Coomassie Blue.