

RP00627

Leader in Biomolecular Solutions for Life Science



Recombinant Human Betatrophin/C19orf80/TD26 Protein

Catalog No.: RP00627 **Recombinant**

Sequence Information

Species	Gene ID	Swiss Prot
Human	55908	Q6UXH0

Tags
C-6×His

Synonyms
C19orf80;PRO1185;PVPA599;RIFL;TD26;
ANGPTL8

Product Information

Source	Purification
<i>E. coli</i>	> 95% by SDS-PAGE.

Endotoxin
< 1 EU/μg of the protein by LAL method.

Formulation
Lyophilized from a 0.2 μm filtered solution of 20mM Tris,150mM NaCl, pH 8.0.Contact us for customized product form or formulation.

Reconstitution
Reconstitute to a concentration of 0.1-0.5 mg/mL in sterile distilled water.

Background

The protein specifically promotes pancreatic beta cell proliferation and beta cell mass expansion, thereby improving glucose tolerance. It promotes pancreatic beta cell proliferation without insulin resistance. Also it acts as a blood lipid regulator by regulating serum triglyceride levels and possibly by promoting ANGPTL3 cleavage. It interacts with ANGPTL3. It is predominantly expressed in liver and also expressed in adipose tissues. The ability of the protein to induce pancreatic beta cell proliferation is promising in diabetes therapy. Betatrophin treatment could supply or replace insulin injections by increasing the number of insulin-producing cells in diabetes.

Basic Information

Description
Recombinant Human Betatrophin/C19orf80/TD26 Protein is produced by <i>E. coli</i> expression system. The target protein is expressed with sequence (Ala22-Ala198) of human Betatrophin/C19orf80/TD26 (Accession #Q6UXH0) fused with an initial Met at the N-terminus and a 6×His tag at the C-terminus.

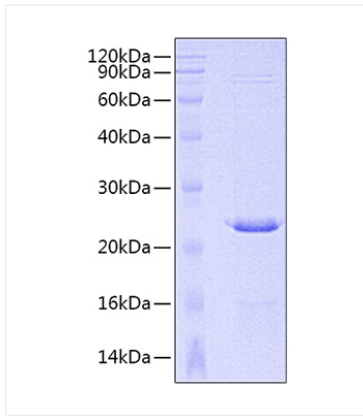
Bio-Activity

Storage
Store the lyophilized protein at -20°C to -80 °C for long term. After reconstitution, the protein solution is stable at -20 °C for 3 months, at 2-8 °C for up to 1 week. Avoid repeated freeze/thaw cycles.

Contact

 | www.abclonal.com

Validation Data



Recombinant Human
Betatrophin/C19orf80/TD26 Protein was
determined by SDS-PAGE under reducing
conditions with Coomassie Blue.