

Recombinant Human CCL26/Eotaxin-3 Protein

Catalog No.: RP00500 **Recombinant**

Sequence Information

Species	Gene ID	Swiss Prot
Human	10344	Q9Y258

Tags

No tag

Synonyms

CCL26;IMAC;MIP-4a;MIP-4alpha;SCYA26;TSC-1

Product Information

Source	Purification
<i>E. coli</i>	> 95% by SDS-PAGE.

Endotoxin

< 1 EU/μg of the protein by LAL method.

Formulation

Lyophilized from a 0.2 μm filtered solution of 20mM PB, 150mM NaCl, pH 7.2. Contact us for customized product form or formulation.

Reconstitution

Reconstitute to a concentration of 0.1-0.5 mg/mL in sterile distilled water.

Contact

 | www.abclonal.com

Background

Chemokine (C C Motif) Ligand 26 (CCL26) is a novel small cytokine belonging to the CC chemokine family, which is involved in immunoregulatory and inflammatory processes. CCL26 is expressed constitutively in thymus, but only transiently in phytohemagglutinin-stimulated peripheral blood mononuclear cells. It specifically binds and induces chemotaxis in T cells and elicits its effects by interacting with the chemokine receptor CCR4. Eotaxin-3/CCL26, along with Eotaxin-1 and Eotaxin-2, selectively activates the CC chemokine receptor 3 (CCR3). The Eotaxin-3-CCR3 interaction may play an important role in allergic diseases such as atopic dermatitis and bronchial asthma. The full-length cDNA for Eotaxin-3 encodes a protein of 94 amino acids with a putative signal peptide of either 23 or 26 amino acid residues. Both the 71 and 68 amino acid residue variants of recombinant Eotaxin-3 demonstrate equal potency in inducing chemotaxis of a human CCR3-transfected cell line. Unlike most other CC chemokines, Eotaxin-3 maps to human chromosome 7q11.2, within 40 kilobases of the Eotaxin-2 loci. Eotaxin-3 and Eotaxin-2 are unique in that they are the only chemokines identified to date that map to chromosome 7.

Basic Information

Description

Recombinant Human CCL26/Eotaxin-3 Protein is produced by *E. coli* expression system. The target protein is expressed with sequence (Ser27-Leu94) of human CCL26/Eotaxin-3 (Accession #Q9Y258) fused with an initial Met at the N-terminus.

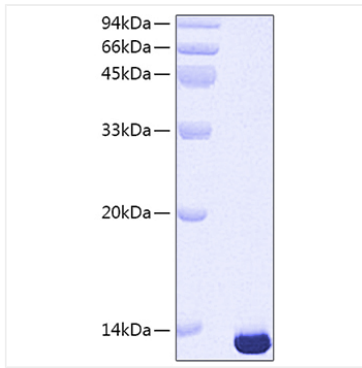
Bio-Activity

Measured by its ability to chemoattract BaF3 mouse pro-B cells transfected with mouse CCR3. The ED₅₀ for this effect is 0.3-1.5 μg/mL.

Storage

Store the lyophilized protein at -20°C to -80 °C for long term. After reconstitution, the protein solution is stable at -20 °C for 3 months, at 2-8 °C for up to 1 week. Avoid repeated freeze/thaw cycles.

Validation Data



Recombinant Human CCL26/Eotaxin-3
Protein was determined by SDS-PAGE
under reducing conditions with Coomassie
Blue.