

Recombinant Human Activin A/INHBA Protein

Catalog No.: RP00414 **Recombinant**

Sequence Information

| Species | Gene ID | Swiss Prot |
|---------|---------|------------|
| Human | 3624 | P08476 |

Tags

No tag

Synonyms

EDF; FRP

Product Information

| Source | Purification |
|--------------|--------------------|
| HEK293 cells | > 95% by SDS-PAGE. |

Endotoxin

< 1 EU/μg of the protein by LAL method.

Formulation

Lyophilized from a 0.2 μm filtered solution of PBS, pH 7.4. Contact us for customized product form or formulation.

Reconstitution

Reconstitute to a concentration of 0.1-0.5 mg/mL in sterile distilled water.

Background

The inhibin beta A subunit joins the alpha subunit to form a pituitary FSH secretion inhibitor. Inhibin has been shown to regulate gonadal stromal cell proliferation negatively and to have tumor-suppressor activity. In addition, serum levels of inhibin have been shown to reflect the size of granulosa-cell tumors and can therefore be used as a marker for primary as well as recurrent disease. Because expression in gonadal and various extragonadal tissues may vary severalfold in a tissue-specific fashion, it is proposed that inhibin may be both a growth/differentiation factor and a hormone. Furthermore, the beta A subunit forms a homodimer, activin A, and also joins with a beta B subunit to form a heterodimer, activin AB, both of which stimulate FSH secretion. Finally, it has been shown that the beta A subunit mRNA is identical to the erythroid differentiation factor subunit mRNA and that only one gene for this mRNA exists in the human genome.

Basic Information

Description

Recombinant Human Activin A/INHBA Protein is produced by Human Cell expression system. The target protein is expressed with sequence (Gly311-Ser426) of human Activin A/INHBA (Accession #P08476).

Bio-Activity

Storage

Store the lyophilized protein at -20°C to -80 °C for long term.

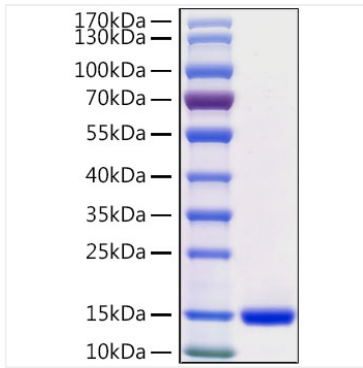
After reconstitution, the protein solution is stable at -20 °C for 3 months, at 2-8 °C for up to 1 week.

Avoid repeated freeze/thaw cycles.

Contact

 | www.abclonal.com

Validation Data



Recombinant protein Human Activin A/INHBA was determined by SDS-PAGE under reducing conditions with Coomassie Blue, showing a band at 15 kDa.