

Recombinant Human Fc gamma RIIB/CD16b Protein

Catalog No.: RP00291 **Recombinant**

Sequence Information

| Species | Gene ID | Swiss Prot |
|---------|---------|------------|
| Human | 2215 | O75015 |

Tags

C-6xHis

Synonyms

CD16;CD16b;Fc gamma RIIB;FCG3;FCGR3;FCR-10;FCRIII;FCRIIB

Product Information

| Source | Purification |
|--------------|--------------------|
| HEK293 cells | > 97% by SDS-PAGE. |

Endotoxin

< 0.1 EU/μg of the protein by LAL method.

Formulation

Lyophilized from a 0.22 μm filtered solution of PBS, pH 7.4. Contact us for customized product form or formulation.

Reconstitution

Reconstitute to a concentration of 0.1-0.5 mg/mL in sterile distilled water.

Background

CD16 is a low affinity Fc receptor, and has been identified as Fc receptors FcγRIIIa (CD16a) and FcγRIIIb (CD16b). These receptors function in the activation or inhibition of immune responses. CD16 encoded by two different highly homologous genes in a cell type-specific manner. CD16 is found on the surface of natural killer cells, neutrophil polymorphonuclear leukocytes, monocytes and macrophages. CD16B is also known as FCGR3B and FCG3B, is expressed specifically by polymorphonuclear leukocytes (neutrophils) and stimulated eosinophils. CD16B is the low affinity receptor for the Fc region of immunoglobulins gamma. CD16B may serve as a trap for immune complexes in the peripheral circulation which does not activate neutrophils.

Basic Information

Description

Recombinant Human Fc gamma RIIB/CD16b Protein is produced by HEK293 cells expression system. The target protein is expressed with sequence (Thr20-Gln208) of human Fc gamma RIIB/CD16b (Accession #NP_000561.3) fused with a 6xHis tag at the C-terminus.

Bio-Activity

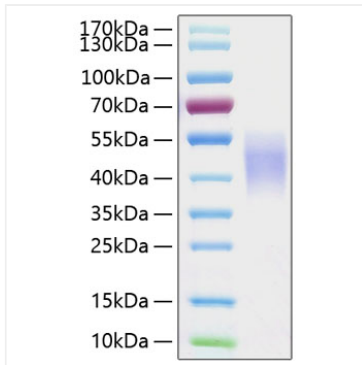
Storage

Store the lyophilized protein at -20°C to -80 °C for long term. After reconstitution, the protein solution is stable at -20 °C for 3 months, at 2-8 °C for up to 1 week. Avoid repeated freeze/thaw cycles.

Contact

 | www.abclonal.com

Validation Data



Recombinant Human Fc gamma RIIIB/CD16b Protein was determined by SDS-PAGE with Coomassie Blue, showing a band at 38-55 kDa.