

RP00128

Leader in Biomolecular Solutions for Life Science



# Recombinant Human Prolactin receptor/PRL-R Protein

Catalog No.: RP00128

Recombinant

## Sequence Information

Species	Gene ID	Swiss Prot
Human	5618	P16471

### Tags

C-His

### Synonyms

HPRL; MFAB; hPRLr1;PRLR;MFAB;hPRLr1

## Product Information

Source	Purification
HEK293 cells	> 97% by SDS-PAGE.

### Endotoxin

< 0.1 EU/μg of the protein by LAL method.

### Formulation

Lyophilized from a 0.22 μm filtered solution of PBS, pH 7.4. Contact us for customized product form or formulation.

### Reconstitution

Centrifuge the vial before opening. Reconstitute to a concentration of 0.1-0.5 mg/mL in sterile distilled water. Avoid vortex or vigorously pipetting the protein. For long term storage, it is recommended to add a carrier protein or stabilizer (e.g. 0.1% BSA, 5% HSA, 10% FBS or 5% Trehalose), and aliquot the reconstituted protein solution to minimize freeze-thaw cycles.

## Contact



[www.abclonal.com](http://www.abclonal.com)

## Background

The protein is a receptor for the anterior pituitary hormone, prolactin, and belongs to the type I cytokine receptor family. Prolactin-dependent signaling occurs as the result of ligand-induced dimerization of the prolactin receptor. Several alternatively spliced transcript variants encoding different membrane-bound and soluble isoforms have been described for this gene, which may function to modulate the endocrine and autocrine effects of prolactin in normal tissue and cancer.

## Basic Information

### Description

Recombinant Human Prolactin receptor/PRL-R Protein is produced by HEK293 expression system. The target protein is expressed with sequence (Gln25-Asp234) of human PRLR/Prolactin Receptor (Accession #NP\_000940.1) fused with a 6xHis tag at the C-terminus.

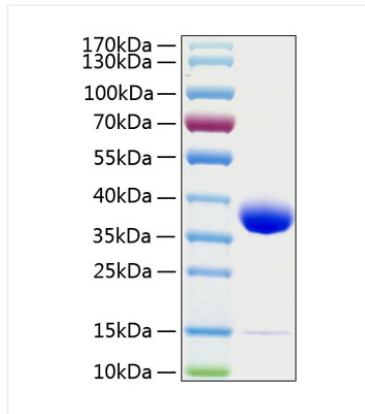
### Bio-Activity

Measured by its binding ability in a functional ELISA. Immobilized Human PRLR/Prolactin Receptor at 1 μg/mL (100 μL/well) can bind Prolactin Receptor Rabbit mAb with a linear range of 0.67-3.45 ng/mL.

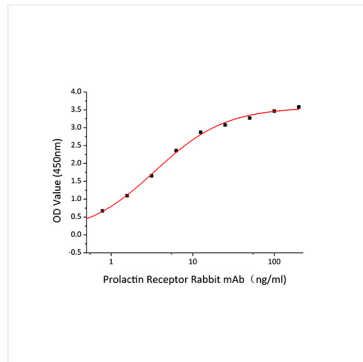
### Storage

Store the lyophilized protein at -20°C to -80 °C for long term. After reconstitution, the protein solution is stable at -20 °C for 3 months, at 2-8 °C for up to 1 week. Avoid repeated freeze/thaw cycles.

## Validation Data



Recombinant Human Prolactin receptor/PRL-R Protein was determined by SDS-PAGE with Coomassie Blue, showing a band at 35 kDa.



Immobilized Human PRLR/Prolactin Receptor at 1 $\mu$ g/mL (100 $\mu$ L/well) can bind Prolactin Receptor Rabbit mAb with a linear range of 0.67-3.45 ng/mL.