

RP00125

Leader in Biomolecular Solutions for Life Science



Recombinant Human Colipase/CLPS Protein

Catalog No.: RP00125 **Recombinant**

Sequence Information

Species	Gene ID	Swiss Prot
Human	1208	P04118

Tags

C-His

Synonyms

CLPS;colipase

Product Information

Source	Purification
HEK293 cells	> 90% by SDS-PAGE.

Endotoxin

< 0.1 EU/μg of the protein by LAL method.

Formulation

Lyophilized from a 0.22 μm filtered solution of PBS, pH 7.4. Contact us for customized product form or formulation.

Reconstitution

Centrifuge the vial before opening. Reconstitute to a concentration of 0.1-0.5 mg/mL in sterile distilled water. Avoid vortex or vigorously pipetting the protein. For long term storage, it is recommended to add a carrier protein or stabilizer (e.g. 0.1% BSA, 5% HSA, 10% FBS or 5% Trehalose), and aliquot the reconstituted protein solution to minimize freeze-thaw cycles.

Contact



www.abclonal.com

Background

The protein is a cofactor needed by pancreatic lipase for efficient dietary lipid hydrolysis. It binds to the C-terminal, non-catalytic domain of lipase, thereby stabilizing an active conformation and considerably increasing the overall hydrophobic binding site. The gene product allows lipase to anchor noncovalently to the surface of lipid micelles, counteracting the destabilizing influence of intestinal bile salts. This cofactor is only expressed in pancreatic acinar cells, suggesting regulation of expression by tissue-specific elements. Three transcript variants encoding different isoforms have been found for this gene.

Basic Information

Description

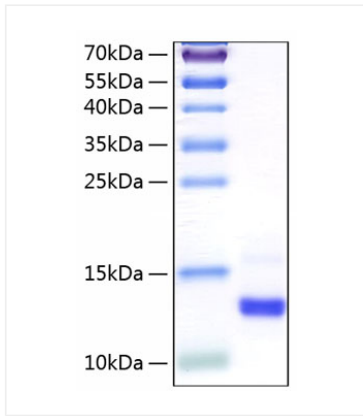
Recombinant Human Colipase/CLPS Protein is produced by HEK293 expression system. The target protein is expressed with sequence (Met1-Gln112) of human CLPS/Colipase (Accession #NP_001823.1) fused with a 6xHis tag at the C-terminus.

Bio-Activity

Storage

Store the lyophilized protein at -20°C to -80 °C for long term. After reconstitution, the protein solution is stable at -20 °C for 3 months, at 2-8 °C for up to 1 week. Avoid repeated freeze/thaw cycles.

Validation Data



Recombinant Human Colipase/CLPS Protein was determined by SDS-PAGE with Coomassie Blue, showing a band at 13 kDa.