

# Recombinant Human Cadherin-17/LI-cadherin/CDH17 Protein

Catalog No.: RP00108 **Recombinant**

## Sequence Information

Species	Gene ID	Swiss Prot
Human	1015	Q12864

**Tags**  
C-6xHis

**Synonyms**  
CDH16;HPT-1;HPT1

## Product Information

Source	Purification
HEK293 cells	> 90% by SDS-PAGE.

**Endotoxin**  
< 0.1 EU/μg of the protein by LAL method.

**Formulation**  
Lyophilized from a 0.22 μm filtered solution of PBS, pH 7.4. Contact us for customized product form or formulation.

**Reconstitution**  
Reconstitute to a concentration of 0.1-0.5 mg/mL in sterile distilled water.

## Background

This protein is a member of the cadherin superfamily, genes encoding calcium-dependent, membrane-associated glycoproteins. The encoded protein is cadherin-like, consisting of an extracellular region, containing 7 cadherin domains, and a transmembrane region but lacking the conserved cytoplasmic domain. The protein is a component of the gastrointestinal tract and pancreatic ducts, acting as an intestinal proton-dependent peptide transporter in the first step in oral absorption of many medically important peptide-based drugs. The protein may also play a role in the morphological organization of liver and intestine. Alternative splicing results in multiple transcript variants.

## Basic Information

**Description**  
Recombinant Human Cadherin-17/LI-cadherin/CDH17 Protein is produced by HEK293 cells expression system. The target protein is expressed with sequence (Gln23-Met787) of human Cadherin-17/LI-cadherin/CDH17 (Accession #NP\_001138135.1) fused with a 6xHis tag at the C-terminus.

### Bio-Activity

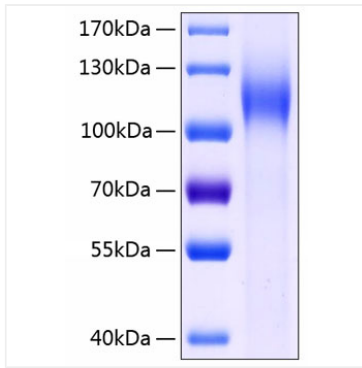
**Storage**  
Store the lyophilized protein at -20°C to -80 °C for long term. After reconstitution, the protein solution is stable at -20 °C for 3 months, at 2-8 °C for up to 1 week. Avoid repeated freeze/thaw cycles.

## Contact

 | [www.abclonal.com](http://www.abclonal.com)

## Validation Data

---



Recombinant Human Cadherin-17/L1-cadherin/CDH17 Protein was determined by SDS-PAGE with Coomassie Blue, showing a band at 105-115 kDa.