

# [One Step] TTC11 / FIS1 antibody Kit

Catalog No.: RK05727

## Basic Information

---

**Observed MW**

**Calculated MW**

**Category**

Primary antibody

## Background

---

### Component

---

Catalog No.	Product Name	Applications	Cross-Reactivity
A5014	HRP Goat Anti-Rabbit IgG (H+L)	ELISA, WB, IHC-P	
A5821	TTC11/FIS1 Rabbit pAb	ELISA, WB, IF/ICC, IP	Human, Mouse, Rat

## Recommended Dilutions

---

**A5014 ELISA** 1:5000 - 1:10000

**A5821 WB** 1:500 - 1:2000

For more information please visit  
[www.abclonal.com](http://www.abclonal.com)

## Product Information

---

**Source**                      **Isotype**

**Purification**

**Storage**

## Contact

---

 | [www.abclonal.com](http://www.abclonal.com)

## Immunogen Information

---

**Gene ID**

**Swiss Prot**

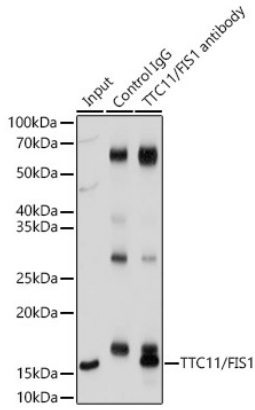
**Immunogen**

Rabbit IgG

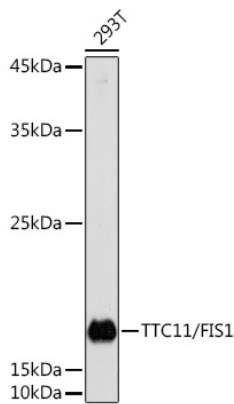
Recombinant fusion protein containing a sequence corresponding to amino acids 1-122 of human TTC11/FIS1 (NP\_057152.2).

**Synonyms**

## Validation Data



Immunoprecipitation analysis of 200 µg extracts of MCF7 cells using 3 µg TTC11/FIS1 antibody (A5821). Western blot was performed from the immunoprecipitate using TTC11/FIS1 antibody (A5821) at a dilution of 1:1000.



Western blot analysis of lysates from 293T cells, using TTC11/FIS1 Rabbit pAb (A5821) at 1:1000 dilution.

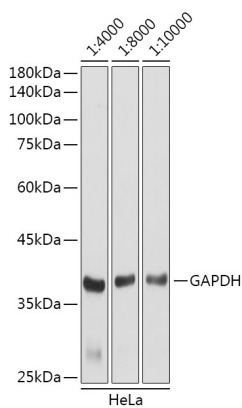
Secondary antibody: HRP Goat Anti-Rabbit IgG (H+L) (AS014) at 1:10000 dilution.

Lysates/proteins: 25µg per lane.

Blocking buffer: 3% nonfat dry milk in TBST.

Detection: ECL Basic Kit (RM00020).

Exposure time: 30s.



Western blot analysis of lysates from HeLa cells, using GAPDH (AC001) antibody as the primary antibody at dilution of 1:80000.

Secondary antibody: using HRP Goat Anti-Rabbit IgG (H+L) antibody (AS014) at 1:4000-1:10000 dilution.

Lysates/proteins: 25µg per lane.

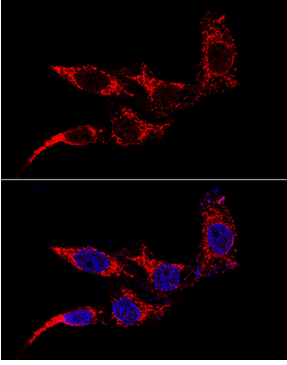
Blocking buffer: 3% nonfat dry milk in TBST.

Detection: ECL Basic Kit (RM00020).

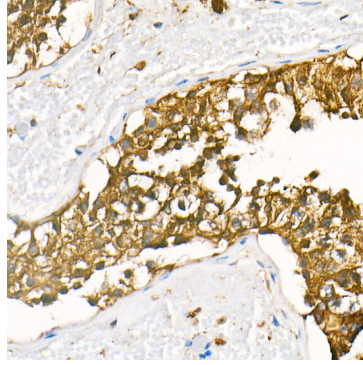
Exposure time: 3s.

## Validation Data

---



Confocal immunofluorescence analysis of HeLa cells using TTC11/FIS1 Rabbit pAb (A5821) at dilution of 1:50 (60x lens). Blue: DAPI for nuclear staining.



Immunohistochemistry analysis of HRP Goat Anti-Rabbit IgG (H+L) in paraffin-embedded human testis tissue using HRP Goat Anti-Rabbit IgG (H+L) (AS014) at a dilution of 1:100 (40x lens). High pressure antigen retrieval was performed with 0.01 M citrate buffer (pH 6.0) prior to IHC staining.