

[One Step]YWHAB Antibody Kit

Catalog No.: RK05723

Basic Information

Catalog No.

RK05723

Applications

WB

Cross-Reactivity

Human, Mouse, Rat

Observed MW

28kDa

Calculated MW

27kDa/28kDa

Category

Antibody kit

Background

This gene encodes a protein belonging to the 14-3-3 family of proteins, members of which mediate signal transduction by binding to phosphoserine-containing proteins. This highly conserved protein family is found in both plants and mammals. The encoded protein has been shown to interact with RAF1 and CDC25 phosphatases, suggesting that it may play a role in linking mitogenic signaling and the cell cycle machinery. Two transcript variants, which encode the same protein, have been identified for this gene.

Product Information

Source

Rabbit

Purification

Affinity purification

Storage

Store at -20°C. Avoid freeze / thaw cycles.

Buffer: PBS with 0.02% sodium azide, 50% glycerol, pH7.3.

Avoid repeated freeze-thaw cycles.

Contact

 | www.abclonal.com

Component & Recommended Dilutions

Catalog No.	Product Name	Dilutions
RK05723-1	YWHAB Rabbit pAb	1:1000 dilution
RK05723-2	HRP Goat Anti-Rabbit IgG (H+L)	1:4000 dilution

Immunogen Information

Gene ID

7529

Swiss Prot

P31946

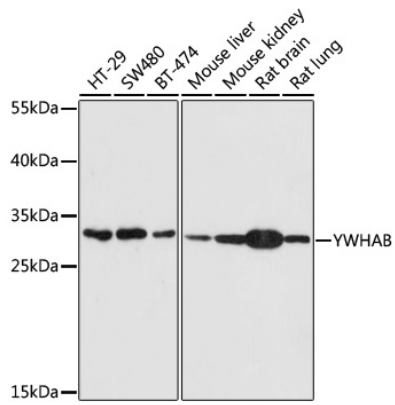
Immunogen

Recombinant fusion protein containing a sequence corresponding to amino acids 1-246 of human YWHAB (NP_647539.1).

Synonyms

YWHAB;GW128;HEL-S-1;HS1;KCIP-1;YWHAA

Validation Data



Western blot analysis of extracts of various cells, using YWHAB antibody (A1023) at 1:1000 dilution ratio through one-step method.