

[One Step]MRPL13 Antibody Kit

Catalog No.: RK05668

Basic Information

Catalog No.

RK05668

Applications

WB

Cross-Reactivity

Human, Mouse, Rat

Observed MW

20kDa

Calculated MW

20kDa

Category

Antibody kit

Product Information

Source

Rabbit

Purification

Affinity purification

Storage

Store at -20°C. Avoid freeze / thaw cycles.

Buffer: PBS with 0.02% sodium azide, 50% glycerol, pH7.3.

Avoid repeated freeze-thaw cycles.

Contact



www.abclonal.com

Background

Mammalian mitochondrial ribosomal proteins are encoded by nuclear genes and help in protein synthesis within the mitochondrion. Mitochondrial ribosomes (mitoribosomes) consist of a small 28S subunit and a large 39S subunit. They have an estimated 75% protein to rRNA composition compared to prokaryotic ribosomes, where this ratio is reversed. Another difference between mammalian mitoribosomes and prokaryotic ribosomes is that the latter contain a 5S rRNA. Among different species, the proteins comprising the mitoribosome differ greatly in sequence, and sometimes in biochemical properties, which prevents easy recognition by sequence homology. This gene encodes a 39S subunit protein.

Component & Recommended Dilutions

| Catalog No. | Product Name | Dilutions |
|-------------|--------------------------------|------------------|
| RK05668-1 | MRPL13 Rabbit pAb | 1:1000 dilution |
| RK05668-2 | HRP Goat Anti-Rabbit IgG (H+L) | 1:10000 dilution |

Immunogen Information

Gene ID

28998

Swiss Prot

Q9BYD1

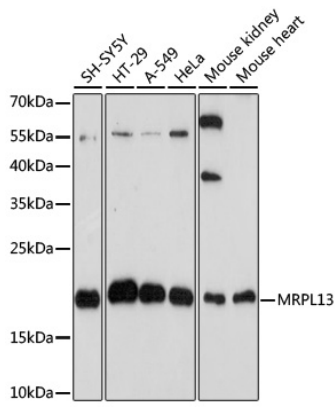
Immunogen

Recombinant fusion protein containing a sequence corresponding to amino acids 1-179 of human MRPL13 (NP_054797.2).

Synonyms

MRPL13;L13;L13A;L13mt;RPL13;RPML13

Validation Data



Western blot analysis of extracts of various cells, using MRPL13 antibody (A5979) at 1:1000 dilution ratio through one-step method.