

AP1248

Leader in Biomolecular Solutions for Life Science



Phospho-ATR-T1989 Rabbit pAb

Catalog No.: AP1248 **2 Publications**

Basic Information

Observed MW

300kDa

Calculated MW

301kDa

Category

Polyclonal Antibody

Applications

WB,IHC-P,ELISA

Cross-Reactivity

Human,Mouse,Rat

Background

The protein encoded by this gene is a serine/threonine kinase and DNA damage sensor, activating cell cycle checkpoint signaling upon DNA stress. The encoded protein can phosphorylate and activate several proteins involved in the inhibition of DNA replication and mitosis, and can promote DNA repair, recombination, and apoptosis. This protein is also important for fragile site stability and centrosome duplication. Defects in this gene are a cause of Seckel syndrome 1.

Recommended Dilutions

WB	1:500 - 1:1000
IHC-P	1:50 - 1:200

Immunogen Information

Gene ID	Swiss Prot
545	Q13535

Immunogen

A synthetic phosphorylated peptide around T1989 of human ATR (NP_001175.2).

Synonyms

FRP1; MEC1; SCKL; FCTCS; SCKL1; Phospho-ATR-T1989

Contact

 www.abclonal.com

Product Information

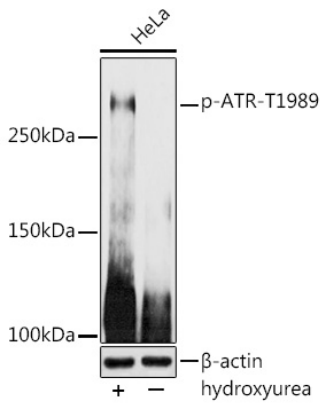
Source	Isotype	Purification
Rabbit	IgG	Affinity purification

Storage

Store at -20°C. Avoid freeze / thaw cycles.

Buffer: PBS with 0.05% proclin300,50% glycerol,pH7.3.

Validation Data



Western blot analysis of lysates from HeLa cells, using Phospho-ATR-T1989 Rabbit pAb (AP1248) at 1:1000 dilution. HeLa cells were treated by Hydroxyurea (4 mM) at 37°C for 20 hours.

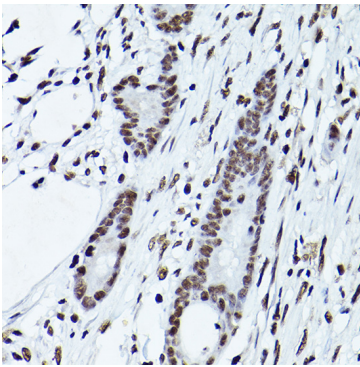
Secondary antibody: HRP Goat Anti-Rabbit IgG (H+L) (AS014) at 1:10000 dilution.

Lysates/proteins: 25µg per lane.

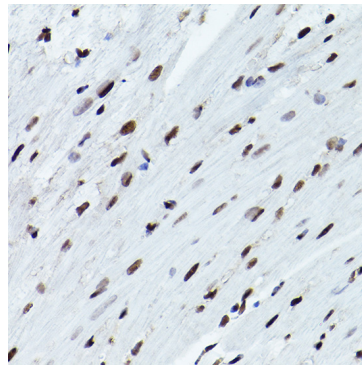
Blocking buffer: 3% nonfat dry milk in TBST.

Detection: ECL Basic Kit (RM00020).

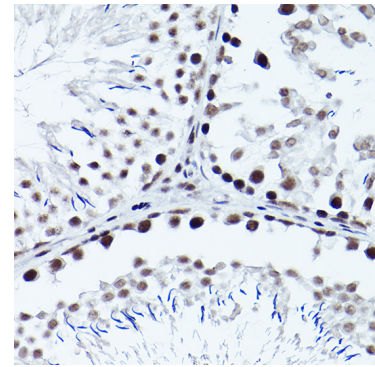
Exposure time: 180s.



Immunohistochemistry analysis of Phospho-ATR-T1989 in paraffin-embedded human colon carcinoma using Phospho-ATR-T1989 Rabbit pAb (AP1248) at dilution of 1:100 (40x lens). Perform high pressure antigen retrieval with 10 mM citrate buffer pH 6.0 before commencing with IHC staining protocol.



Immunohistochemistry analysis of Phospho-ATR-T1989 in paraffin-embedded mouse heart using Phospho-ATR-T1989 Rabbit pAb (AP1248) at dilution of 1:100 (40x lens). Perform high pressure antigen retrieval with 10 mM citrate buffer pH 6.0 before commencing with IHC staining protocol.



Immunohistochemistry analysis of Phospho-ATR-T1989 in paraffin-embedded rat testis using Phospho-ATR-T1989 Rabbit pAb (AP1248) at dilution of 1:100 (40x lens). Perform high pressure antigen retrieval with 10 mM citrate buffer pH 6.0 before commencing with IHC staining protocol.