

AP1192

Leader in Biomolecular Solutions for Life Science



# Phospho-MCM2-S139 Rabbit pAb

Catalog No.: AP1192

## Basic Information

### Observed MW

125kDa

### Calculated MW

102kDa

### Category

Polyclonal Antibody

### Applications

WB,ELISA

### Cross-Reactivity

Human

## Background

The protein encoded by this gene is one of the highly conserved mini-chromosome maintenance proteins (MCM) that are involved in the initiation of eukaryotic genome replication. The hexameric protein complex formed by MCM proteins is a key component of the pre-replication complex (pre\_RC) and may be involved in the formation of replication forks and in the recruitment of other DNA replication related proteins. This protein forms a complex with MCM4, 6, and 7, and has been shown to regulate the helicase activity of the complex. This protein is phosphorylated, and thus regulated by, protein kinases CDC2 and CDC7. Multiple alternatively spliced transcript variants have been found, but the full-length nature of some variants has not been defined.

## Recommended Dilutions

WB 1:500 - 1:1000

## Immunogen Information

### Gene ID

4171

### Swiss Prot

P49736

### Immunogen

A synthetic phosphorylated peptide around S139 of human MCM2 (NP\_004517.2).

### Synonyms

BM28; CCNL1; CDCL1; cdc19; DFNA70; D3S3194; MITOTIN; Phospho-MCM2-S139

## Contact

 [www.abclonal.com](http://www.abclonal.com)

## Product Information

### Source

Rabbit

### Isotype

IgG

### Purification

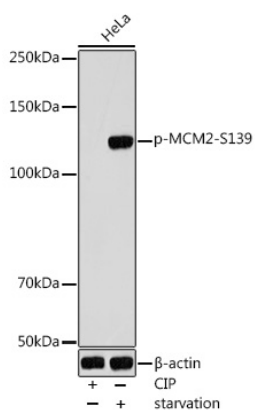
Affinity purification

### Storage

Store at -20°C. Avoid freeze / thaw cycles.

Buffer: PBS with 0.01% thimerosal, 50% glycerol, pH7.3.

## Validation Data



Western blot analysis of lysates from HeLa cells, using Phospho-MCM2-S139 Rabbit pAb (AP1192) at 1:1000 dilution. HeLa cells were treated by CIP (20uL/400ul) at 37°C for 1 hour. HeLa cells were treated by Serum-starvation overnight at 37°C. Secondary antibody: HRP Goat Anti-Rabbit IgG (H+L) (AS014) at 1:10000 dilution. Lysates/proteins: 25µg per lane. Blocking buffer: 3% nonfat dry milk in TBST. Detection: ECL Basic Kit (RM00020). Exposure time: 180s.