

AP1171

Leader in Biomolecular Solutions for Life Science



Phospho-AMPKa1/AMPKa2-T183/T172 Rabbit pAb

Catalog No.: AP1171 **3 Publications**

Basic Information

Observed MW

62kDa

Calculated MW

64kDa/65kDa/62kDa

Category

Mouse Monoclonal Antibody

Applications

WB,ELISA

Cross-Reactivity

Human,Mouse,Rat

Background

The protein encoded by this gene belongs to the ser/thr protein kinase family. It is the catalytic subunit of the 5'-prime-AMP-activated protein kinase (AMPK). AMPK is a cellular energy sensor conserved in all eukaryotic cells. The kinase activity of AMPK is activated by the stimuli that increase the cellular AMP/ATP ratio. AMPK regulates the activities of a number of key metabolic enzymes through phosphorylation. It protects cells from stresses that cause ATP depletion by switching off ATP-consuming biosynthetic pathways. Alternatively spliced transcript variants encoding distinct isoforms have been observed.

Recommended Dilutions

WB 1:500 - 1:2000

Immunogen Information

Gene ID

5562/5563

Swiss Prot

Q13131/P54646

Immunogen

A synthetic phosphorylated peptide around T183 of human AMPKa1/AMPKa2PRKAA1 (NP_006242.5).

Synonyms

AMPKa1/AMPKa2; Phospho-AMPKa1/AMPKa2-T183/T172

Contact



www.abclonal.com

Product Information

Source

Rabbit

Isotype

IgG

Purification

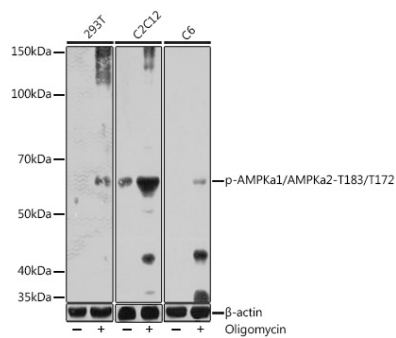
Affinity purification

Storage

Store at -20°C. Avoid freeze / thaw cycles.

Buffer: PBS with 0.01% thimerosal,50% glycerol,pH7.3.

Validation Data



Western blot analysis of various lysates using Phospho-AMPK1/AMPK2-T183/T172 Rabbit pAb (AP1171) at 1:1000 dilution. 293T cells were treated by oligomycin (0.5 μ M) at 37°C for 30 minutes. C2C12 cells were treated by oligomycin (0.5 μ M) at 37°C for 30 minutes after serum-starvation overnight. C6 cells were treated by oligomycin (0.5 μ M) at 37°C for 30 minutes after serum-starvation overnight.

Secondary antibody: HRP Goat Anti-Rabbit IgG (H+L) (AS014) at 1:10000 dilution.

Lysates/proteins: 25 μ g per lane.

Blocking buffer: 3% BSA.

Detection: ECL Enhanced Kit (RM00021).

Exposure time: 60s.