

AP1129

Leader in Biomolecular Solutions for Life Science



# Phospho-GYS1-S641 Rabbit mAb

Catalog No.: AP1129 **Recombinant**

## Basic Information

### Observed MW

85kDa

### Calculated MW

84kDa

### Category

SMab Recombinant Monoclonal  
Antibody

### Applications

WB,ELISA

### Cross-Reactivity

Human,Mouse

### CloneNo number

ARC0207

## Background

The protein encoded by this gene catalyzes the addition of glucose monomers to the growing glycogen molecule through the formation of alpha-1,4-glycoside linkages. Mutations in this gene are associated with muscle glycogen storage disease. Alternatively spliced transcript variants encoding different isoforms have been found for this gene.

## Recommended Dilutions

WB 1:500 - 1:2000

## Immunogen Information

### Gene ID

2997

### Swiss Prot

P13807

### Immunogen

A synthetic phosphorylated peptide around S641 of human Glycogen synthase 1 (GYS1) (P13807).

### Synonyms

GSY; GYS; Phospho-GYS1-S641

## Contact

 [www.abclonal.com](http://www.abclonal.com)

## Product Information

### Source

Rabbit

### Isotype

IgG

### Purification

Affinity purification

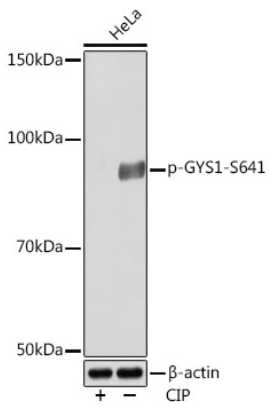
### Storage

Store at -20°C. Avoid freeze / thaw cycles.

Buffer: PBS with 0.02% sodium azide,0.05% BSA,50% glycerol,pH7.3.

## Validation Data

---



Western blot analysis of extracts of various cell lines, using Phospho-GYS1-S641 Rabbit mAb (A4774) at 1:1000 dilution. HeLa cells were treated by CIP (20uL/400ul) at 37°C for 1 hour.

Secondary antibody: HRP Goat Anti-Rabbit IgG (H+L) (AS014) at 1:10000 dilution.

Lysates/proteins: 25µg per lane.

Blocking buffer: 3% BSA.

Detection: ECL Basic Kit (RM00020).

Exposure time: 10s.