

AP1118

Leader in Biomolecular Solutions for Life Science



Phospho-Ezrin-Y353 Rabbit pAb

Catalog No.: AP1118

Basic Information

Observed MW

70kDa

Calculated MW

69kDa

Category

Polyclonal Antibody

Applications

WB,ELISA

Cross-Reactivity

Human

Background

The cytoplasmic peripheral membrane protein encoded by this gene functions as a protein-tyrosine kinase substrate in microvilli. As a member of the ERM protein family, this protein serves as an intermediate between the plasma membrane and the actin cytoskeleton. This protein plays a key role in cell surface structure adhesion, migration and organization, and it has been implicated in various human cancers. A pseudogene located on chromosome 3 has been identified for this gene. Alternatively spliced variants have also been described for this gene.

Recommended Dilutions

WB 1:500 - 1:2000

Immunogen Information

Gene ID

7430

Swiss Prot

P15311

Immunogen

A synthetic phosphorylated peptide around Y353 of human Ezrin (NP_003370.2).

Synonyms

CVL; CVIL; VIL2; HEL-S-105; Phospho-Ezrin-Y353

Contact



www.abclonal.com

Product Information

Source

Rabbit

Isotype

IgG

Purification

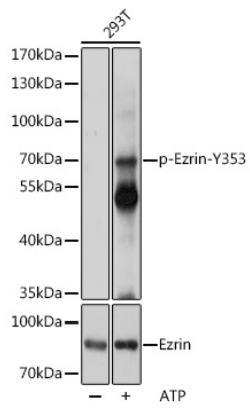
Affinity purification

Storage

Store at -20°C. Avoid freeze / thaw cycles.

Buffer: PBS with 0.01% thimerosal, 50% glycerol, pH7.3.

Validation Data



Western blot analysis of lysates from 293T cells, using Phospho-Ezrin-Y353 Rabbit pAb (A0703). 293T cells were treated by ATP (5 mM) at 30°C for 1 hour.

Secondary antibody: HRP Goat Anti-Rabbit IgG (H+L) (AS014) at 1:10000 dilution.

Lysates/proteins: 25 µg per lane.

Blocking buffer: 3% BSA.

Detection: ECL Basic Kit (RM00020).

Exposure time: 1s.