

AP1090

Leader in Biomolecular Solutions for Life Science



# Phospho-FOXO1-S319 Rabbit pAb

Catalog No.: AP1090

## Basic Information

---

### Observed MW

90kDa

### Calculated MW

70kDa

### Category

Polyclonal Antibody

### Applications

WB,IHC-P,ELISA

### Cross-Reactivity

Human,Mouse,Rat

## Background

---

This gene belongs to the forkhead family of transcription factors which are characterized by a distinct forkhead domain. The specific function of this gene has not yet been determined; however, it may play a role in myogenic growth and differentiation. Translocation of this gene with PAX3 has been associated with alveolar rhabdomyosarcoma.

## Recommended Dilutions

---

WB	1:500 - 1:2000
IHC-P	1:50 - 1:200

## Immunogen Information

---

<b>Gene ID</b>	<b>Swiss Prot</b>
2308	Q12778

### Immunogen

A synthetic phosphorylated peptide around S319 of human FOXO1 (NP\_002006.2).

### Synonyms

FKH1; FKHR; FOXO1A; Phospho-FOXO1-S319

## Contact

---

 [www.abclonal.com](http://www.abclonal.com)

## Product Information

---

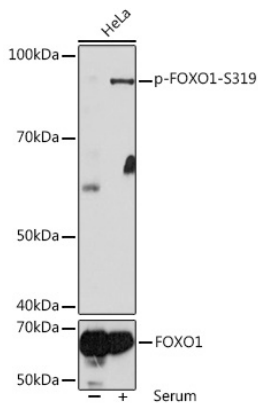
<b>Source</b>	<b>Isotype</b>	<b>Purification</b>
Rabbit	IgG	Affinity purification

### Storage

Store at -20°C. Avoid freeze / thaw cycles.

Buffer: PBS with 0.01% thimerosal, 50% glycerol, pH7.3.

## Validation Data



Western blot analysis of lysates from HeLa cells, using Phospho-FOXO1-S319 Rabbit pAb (AP1090) at 1:1000 dilution or FOXO1 antibody (A13862). HeLa cells were treated by 10% FBS at 37°C for 30 minutes after serum-starvation overnight.

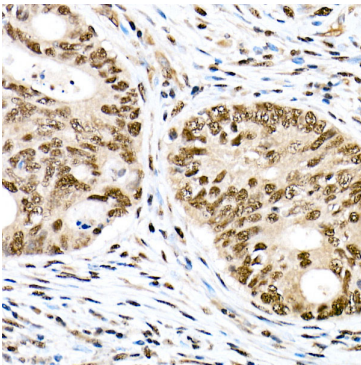
Secondary antibody: HRP Goat Anti-Rabbit IgG (H+L) (AS014) at 1:10000 dilution.

Lysates/proteins: 25µg per lane.

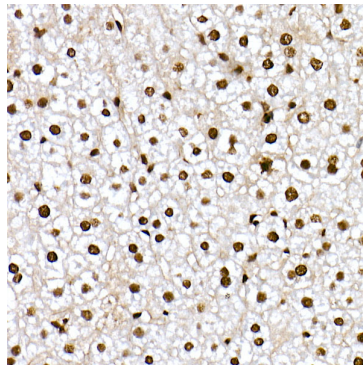
Blocking buffer: 3% BSA.

Detection: ECL Basic Kit (RM00020).

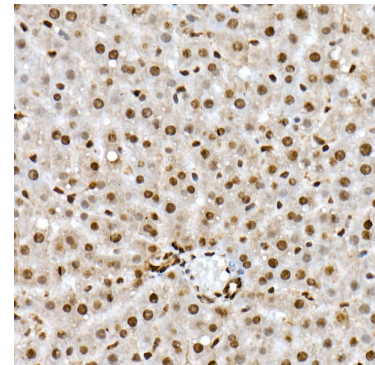
Exposure time: 10s.



Immunohistochemistry analysis of paraffin-embedded Human colon carcinoma using Phospho-FOXO1-S319 Rabbit pAb (AP1090) at dilution of 1:50 (40x lens). Perform high pressure antigen retrieval with 10 mM citrate buffer pH 6.0 before commencing with IHC staining protocol.



Immunohistochemistry analysis of paraffin-embedded Mouse liver using Phospho-FOXO1-S319 Rabbit pAb (AP1090) at dilution of 1:50 (40x lens). Perform high pressure antigen retrieval with 10 mM citrate buffer pH 6.0 before commencing with IHC staining protocol.



Immunohistochemistry analysis of paraffin-embedded Rat liver using Phospho-FOXO1-S319 Rabbit pAb (AP1090) at dilution of 1:50 (40x lens). Perform high pressure antigen retrieval with 10 mM citrate buffer pH 6.0 before commencing with IHC staining protocol.